

Beginning of
worksite

1500'

"Worksite"
"Speed Limit 45"
"When Flasing"

1500'

"Worksite"
"Reduced Speed"
45 Ahead"

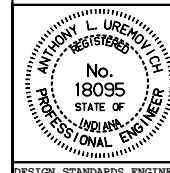
NOTES

1. Worksite speed limit sign assemblies shall be placed on both sides of the roadway only where approaching the construction site with all lanes open to traffic traveling in the same direction.
2. Worksite speed limit sign assemblies shall be placed at 500 ft. beyond each crossroad or the last entrance ramp for each interchange, at 2 mi intervals throughout the worksite, or adjacent to the existing permanent speed limit signs.

INDIANA DEPARTMENT OF TRANSPORTATION

**WORKSITE SPEED LIMIT
SIGN ASSEMBLY
SEPTEMBER 1999**

STANDARD DRAWING NO. E 801-TCDV-11



/s/ Anthony L. Urenovich 9-01-99
DESIGN STANDARDS ENGINEER DATE

/s/ Donald W. Lucas 9-01-99
CHIEF HIGHWAY ENGINEER DATE

DESIGN STANDARDS ENGINEER