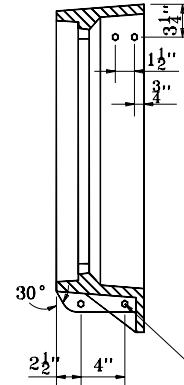
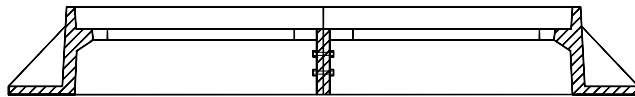


PLAN



SECTION B-B

4 - 5/8" hex head stainless steel cap screws and flat washers



SECTION A-A

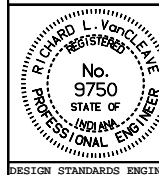
INDIANA DEPARTMENT OF TRANSPORTATION

CASTING TYPE 5

ALTERNATE BOLTED FRAME

SEPTEMBER 2001

STANDARD DRAWING NO. **E 720-ICCA-02**



/s/ Anthony L. Uremovich 9-04-01
DESIGN STANDARDS ENGINEER DATE

/s/ Firooz Zandi 9-04-01
CHIEF HIGHWAY ENGINEER DATE

DESIGN STANDARDS ENGINEER