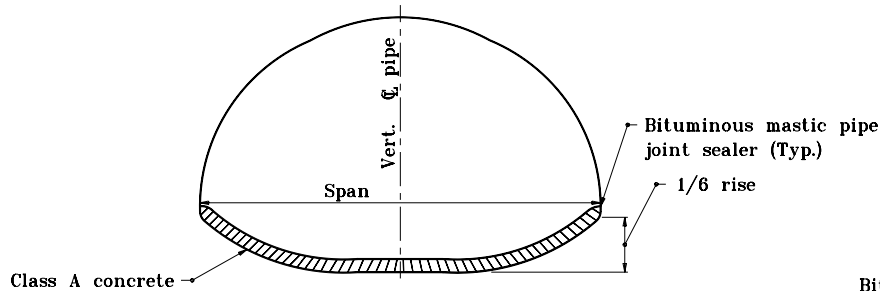
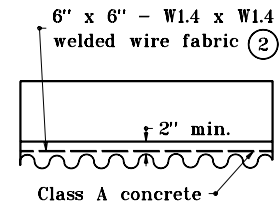


END STABILIZATION OF 3' x 1' CORRUGATED STEEL PIPE-ARCH SECTIONS ①

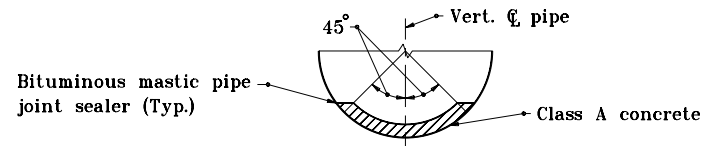
- ① In order to maintain their manufactured shape, all 3' x 1' corrugated steel pipe-arch sections shall have wire ties attached at each end as shown in the detail. The wire ties shall be attached across the largest vertical and horizontal dimension of the pipe-arch. The wire ties shall be installed by the manufacturer and shall remain in place until the on-site installation is complete.
- ② Welded wire fabric shall be securely wired to every second circumferential bolt and every twelfth longitudinal bolt.



STRUCTURAL PLATE PIPE-ARCH CULVERT ELEVATION

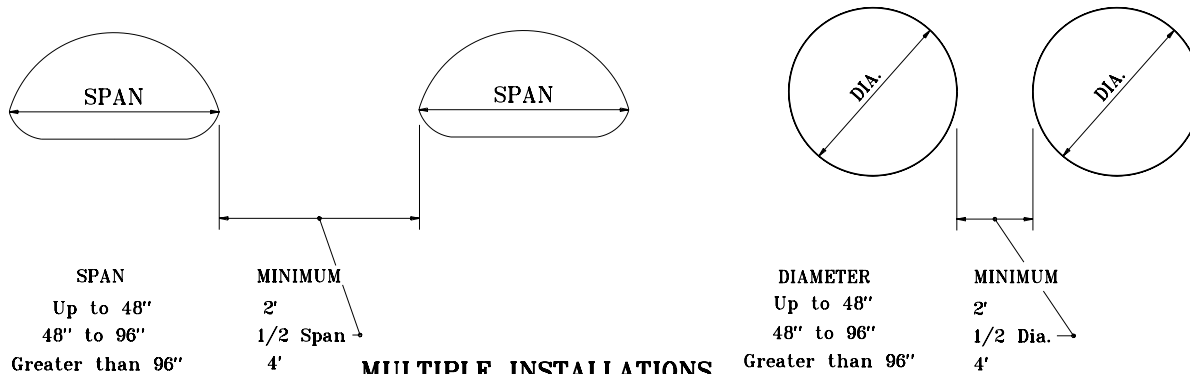


TYPICAL LONGITUDINAL SECTION



STRUCTURAL PLATE PIPE CULVERT

CONCRETE FIELD PAVED INVERT DETAILS



MULTIPLE INSTALLATIONS

INDIANA DEPARTMENT OF TRANSPORTATION	
MISCELLANEOUS PIPE DETAILS	
JANUARY 1998	
STANDARD DRAWING NO. E 715-PIPE-02	
	DETAILS PLACED IN THIS FORMAT 7-27-99
	/s/ Anthony L. Uremovich 7-27-99 DESIGN STANDARDS ENGINEER DATE
	/s/ Pirooz Zandi 7-27-99 CHIEF HIGHWAY ENGINEER DATE
DESIGN STANDARDS ENGINEER	ORIGINALLY APPROVED 1-02-98