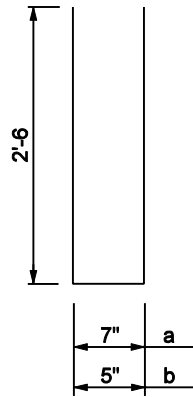


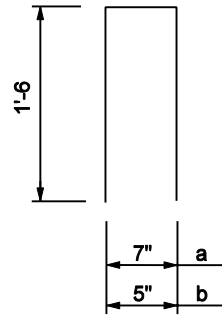
NOTES:

See Standard Drawing E 706-TASE-05 for General Notes.



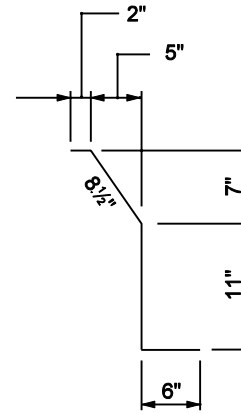
582a x 5'-7

582b x 5'-5



584a x 3'-7

584b x 3'-5



585 x 2'-4

BILL OF MATERIALS

These quantities are for one concrete bridge railing transition type TBC.

EPOXY COATED REINFORCING STEEL			
Size & #	No. of Bars	Length ft-in	Weight lb
582a	15	5'-7	
582b	16	5'-5	
584a	15	3'-7	
584b	16	3'-5	
585	11	2'-4	
#5	13	5'-9	
Total #5 Bars			
#4	7	12'-3	
Total Epoxy Coated Steel			461
MISCELLANEOUS in RAILING			
Concrete, Class C (yd ³)			1.2
Surface Seal (ft ²)			100

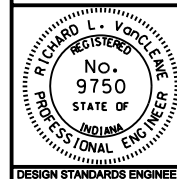
33" COMMON HEIGHT THRIE BEAM /
CONCRETE BRIDGE RAILING TRANSITION

INDIANA DEPARTMENT OF TRANSPORTATION

**CONCRETE BRIDGE RAILING
TRANSITION TYPE TBC**

MARCH 2003

STANDARD DRAWING NO. E 706-TTBC-03



/s/ Richard L. VanCleave 3-03-03
DESIGN STANDARDS ENGINEER DATE

/s/ Richard K. Smutzer 3-03-03
CHIEF HIGHWAY ENGINEER DATE

DESIGN STANDARDS ENGINEER