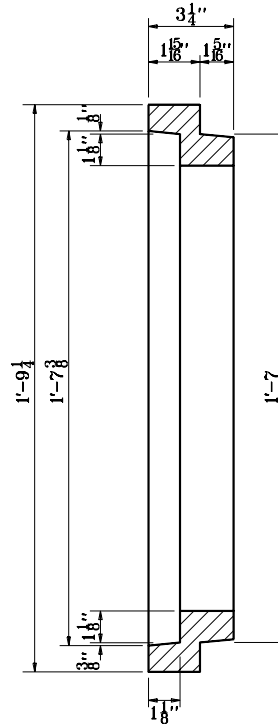
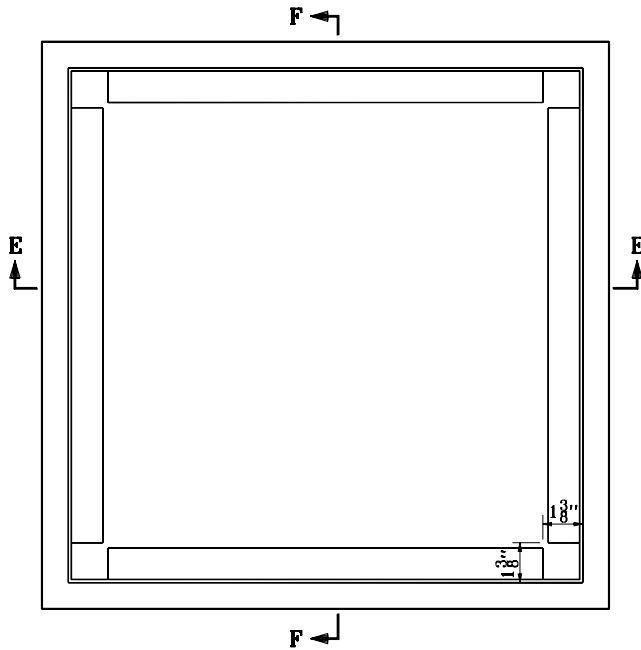
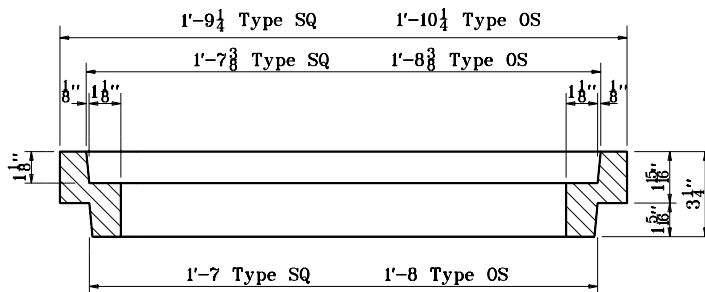


**GENERAL NOTES**

1. 4 -  $\frac{5}{16}$ "  $\phi$  x  $3\frac{3}{4}$ " ctsk. head stainless steel screws required for each frame.
2. The Type SQ frame weighs approximately 87 lb. The Type OS frame weighs approximately 89 lb.

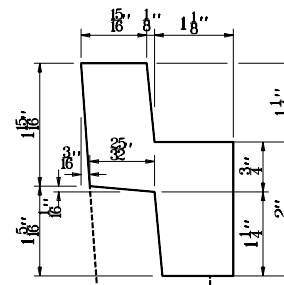


**SECTION F-F**



**SECTION E-E**

**ADJUSTING FRAME TYPE SQ AND OS**



**RING DETAILS**

Existing casting

INDIANA DEPARTMENT OF TRANSPORTATION	
ADJUSTING FRAME DETAILS	
TYPE SQ AND OS	
SEPTEMBER 1994	
STANDARD DRAWING NO. E 704-BDAF-01	
	DETAILS PLACED IN THIS FORMAT 11-15-99 /s/ Anthony L. Uremovich 11-15-99 DESIGN STANDARDS ENGINEER DATE
DESIGN STANDARDS ENGINEER	/s/ Firooz Zandi 11-15-99 CHIEF HIGHWAY ENGINEER DATE ORIGINALLY APPROVED 9-01-94