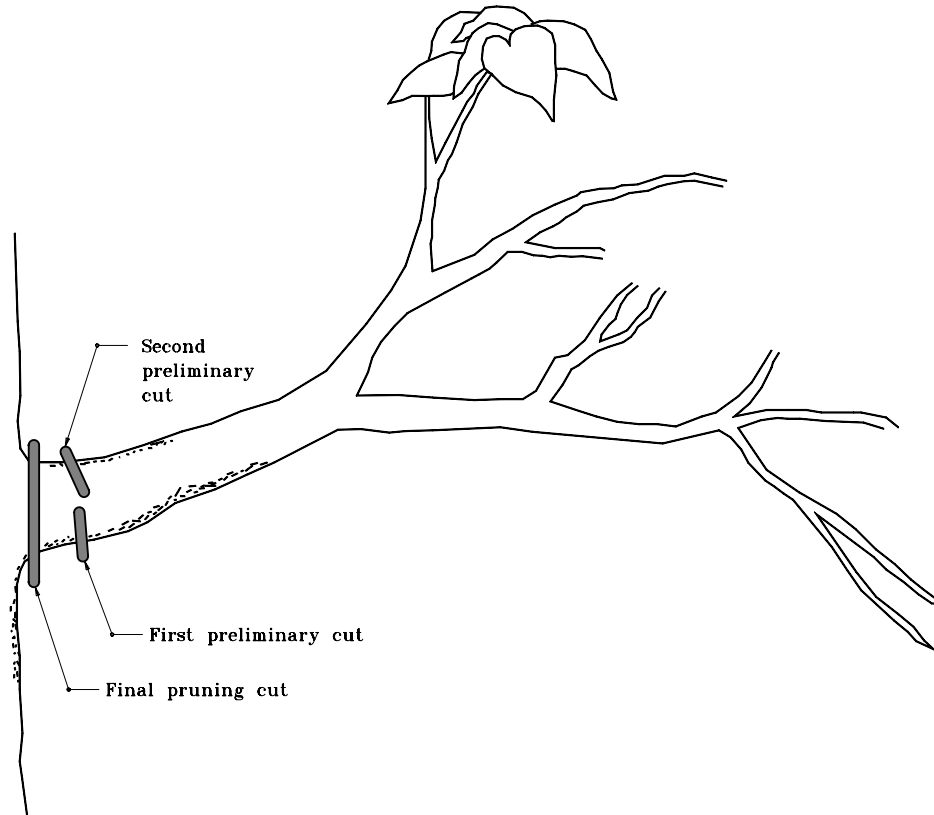


GENERAL NOTES

1. This is a suggested method for pruning heavier limbs. If these limbs are not properly cut, damage to adjacent portions of the tree may occur.

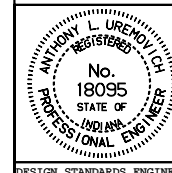


INDIANA DEPARTMENT OF TRANSPORTATION

**PRUNING PROCEDURE
HEAVIER LIMBS**

APRIL 1995

STANDARD DRAWING NO. **E 622-LSPR-07**



DETAILS PLACED IN THIS FORMAT 11-15-99

/s/ Anthony L. Uremovich 11-15-99
DESIGN STANDARDS ENGINEER DATE

/s/ Firooz Zandi 11-15-99
CHIEF HIGHWAY ENGINEER DATE

DESIGN STANDARDS ENGINEER

ORIGINALLY APPROVED 4-01-95