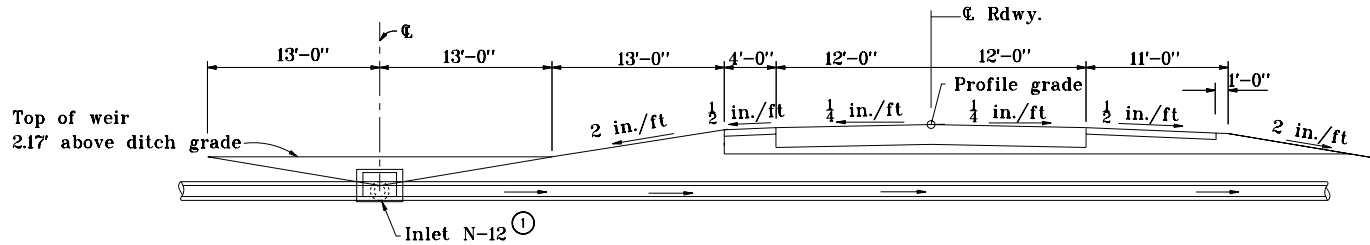
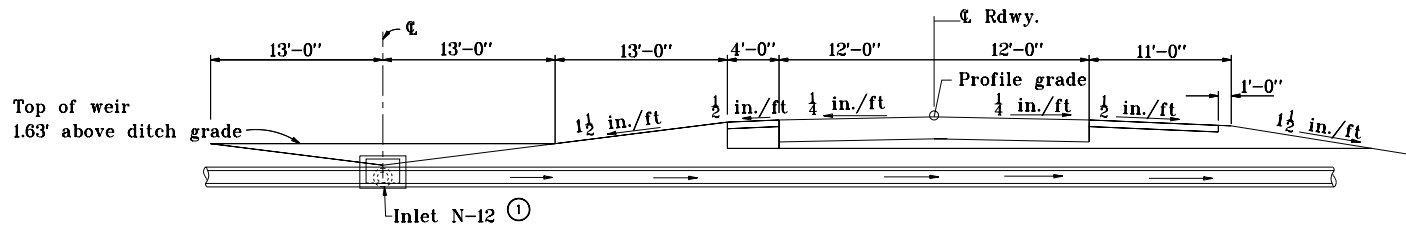


**GENERAL NOTES**

① See Standard Drawing MS for inlet type N-12 details.



USE WITH MEDIAN SLOPE OF 2 in./ft



USE WITH MEDIAN SLOPE OF 1 1/2 in./ft

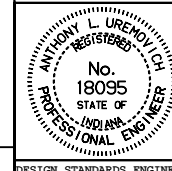
All dimensions are in mm unless otherwise specified.

INDIANA DEPARTMENT OF TRANSPORTATION

**CENTER DITCH INLET  
PARALLEL TO ℄ ROADWAY**

MAY 1998

STANDARD DRAWING NO. E 617-CDIN-02



/s/ Anthony L. Uremovich 5-01-98  
DESIGN STANDARDS ENGINEER DATE

/s/ Donald W. Lucas 5-01-98  
CHIEF HIGHWAY ENGINEER DATE

Source Sheet: MS1

DESIGN STANDARDS ENGINEER