

GENERAL NOTES

1. All Class VII drives shall be PCCP to at least the Right-of-Way line with minimum length 20'.
2. See Standard Drawings E 610-DRIV-13 for General Notes and Legend.
3. See Standard Drawing E 610-DRIV-12 for sections A-A, B-B and C-C.
4. Joint Placement Detail should be used with Class I, III and VII drives.
5. The Class VII Drive accommodates a WB-65 (IDV) design vehicles with a 45 ft. turning radius.

LEGEND

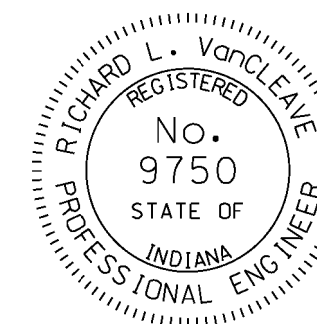
- (B) Use ear construction Type B as on Standard Drawing E 605-ERCN-02.
- (C) Use ear construction Type A as on Standard Drawing E 605-ERCN-01.
- (M) HMA for Approaches:
 165#/syd HMA Surface Type B on
 275#/syd HMA Intermediate Type B on
 880#/syd HMA base, Type B on
 subgrade treatment Type IIIA
 or
 PCCP for Approaches, 9 in., on
 subgrade treatment Type IIIA

INDIANA DEPARTMENT OF TRANSPORTATION

CLASS VII DRIVE AND
JOINT PLACEMENT DETAIL

SEPTEMBER 2009

STANDARD DRAWING NO. E 610-DRIV-07



DESIGN STANDARDS ENGINEER

/s/ Richard L. VanCleave 09/01/09
DESIGN STANDARDS ENGINEER DATE

/s/ Mark A. Miller 09/01/09
CHIEF HIGHWAY ENGINEER DATE