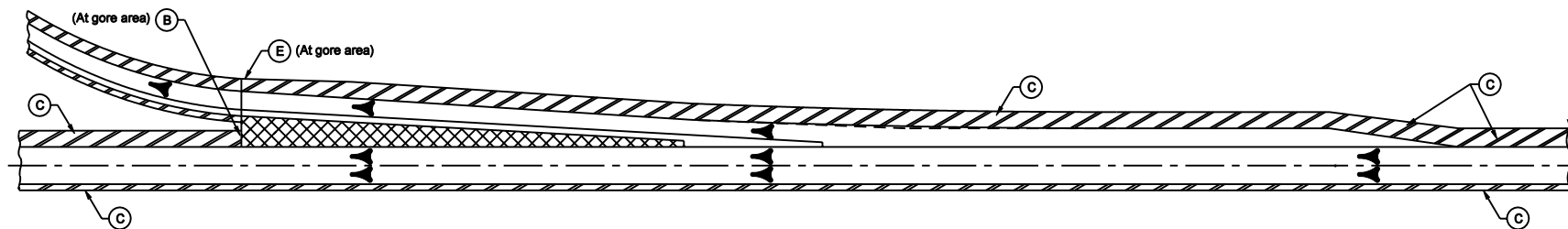

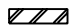



ENTRANCE RAMP



EXIT RAMP

LEGEND

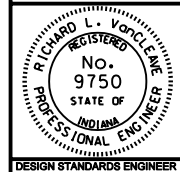
- (B) Begin Shoulder Corrugations
- (C) Shoulder Corrugations
- (E) End Shoulder Corrugations
-  Gore Area
-  Shoulder
-  Direction of Traffic

INDIANA DEPARTMENT OF TRANSPORTATION

SHOULDER CORRUGATION LIMITS

MARCH 2003

STANDARD DRAWING NO. E 606-SHCG-03



/s/ Richard L. VanCleave 3-03-03
DESIGN STANDARDS ENGINEER DATE

/s/ Richard K. Smutzer 3-03-03
CHIEF HIGHWAY ENGINEER DATE

DESIGN STANDARDS ENGINEER