

Two (at each post) -  $\frac{5}{8}$ " $\phi$  x 1'-9" std. button head bolts w/rectangular plate washers, round washers, and recess nuts.

Two -  $\frac{5}{8}$ " $\phi$  x 2" std. button head bolts w/rectangular plate washers, round washers, and recess nuts, through rail sections.

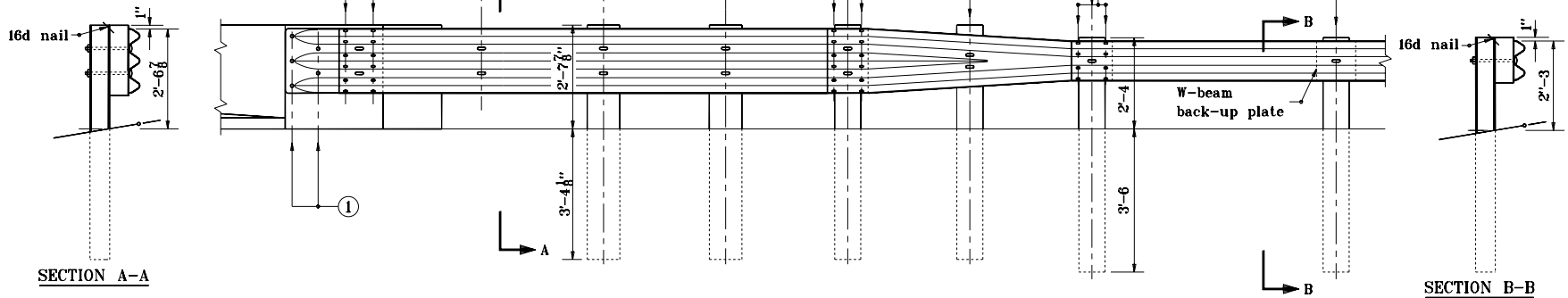
Twelve -  $\frac{5}{8}$ " $\phi$  x 2" std. button head bolts with round washers and recess nuts, through rail section and terminal connector

Twelve -  $\frac{5}{8}$ " $\phi$  x 2" std. button head bolts with round washers and recess nuts

Two (at each post) -  $\frac{5}{8}$ " $\phi$  x 1'-7" std. button head bolts w/rectangular plate washers, round washers, and recess nuts

One (at each post) -  $\frac{5}{8}$ " $\phi$  x 1'-7" std. button head bolt w/rectangular plate washer, round washer, and recess nut.

Eight -  $\frac{5}{8}$ " $\phi$  x 2" std. button head bolts w/round washer and recess nuts



NOTES

- ① See pier connection details for connection of terminal connector.  
See Standard Drawing E 601-TTGP-01 (use proper end detail).

INDIANA DEPARTMENT OF TRANSPORTATION	
GUARDRAIL TRANSITION	
TYPE GP	
APRIL 1996	
STANDARD DRAWING NO. E 601-TTGP-02	
	DETAILS PLACED IN THIS FORMAT 11-15-99 /s/ Anthony L. Uremovich 11-15-99 DESIGN STANDARDS ENGINEER DATE
DESIGN STANDARDS ENGINEER	/s/ Firooz Zandi 11-15-99 CHIEF HIGHWAY ENGINEER DATE ORIGINALLY APPROVED 4-01-96