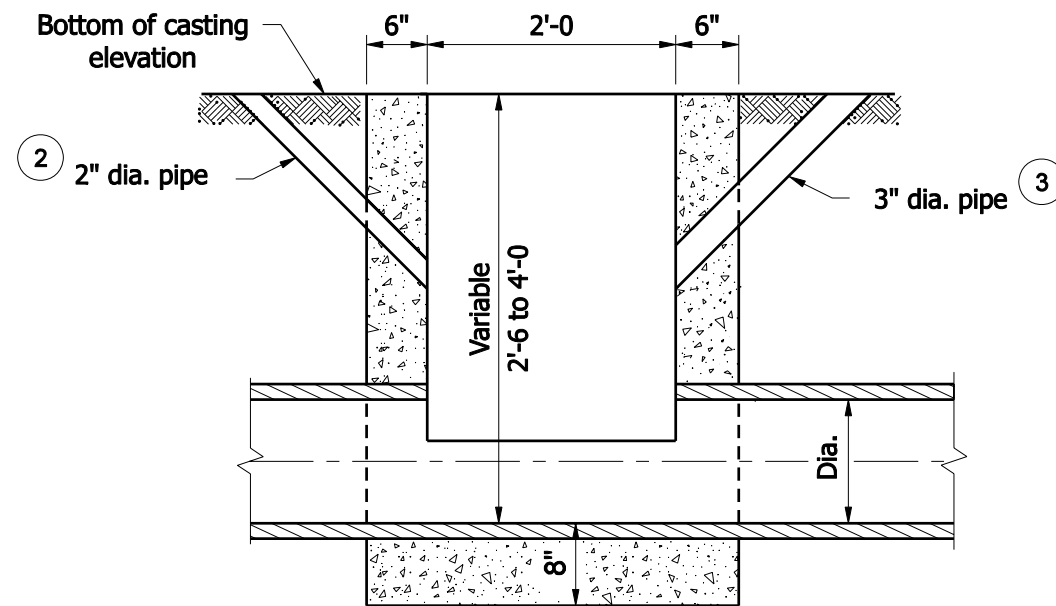


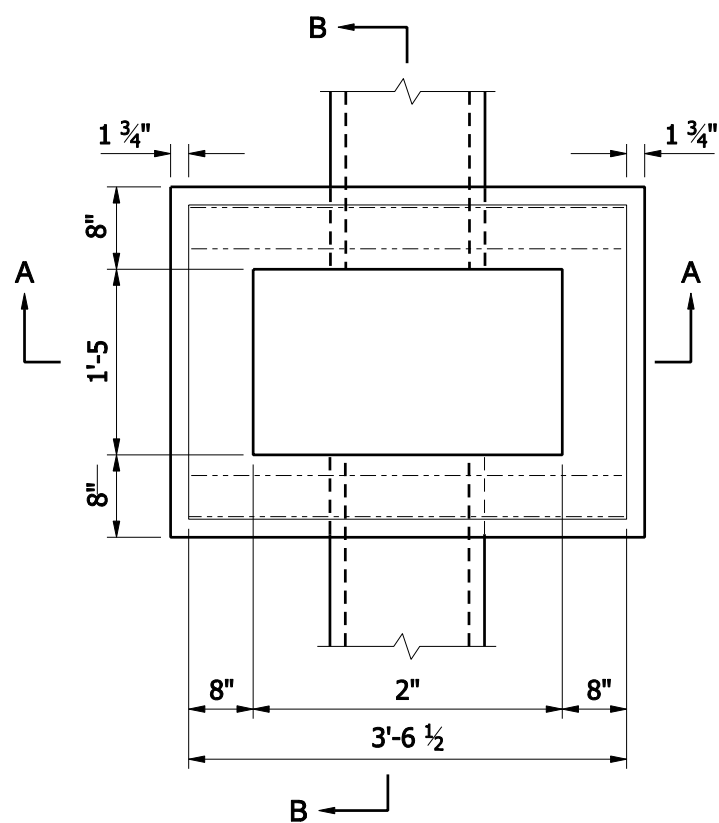
PLAN



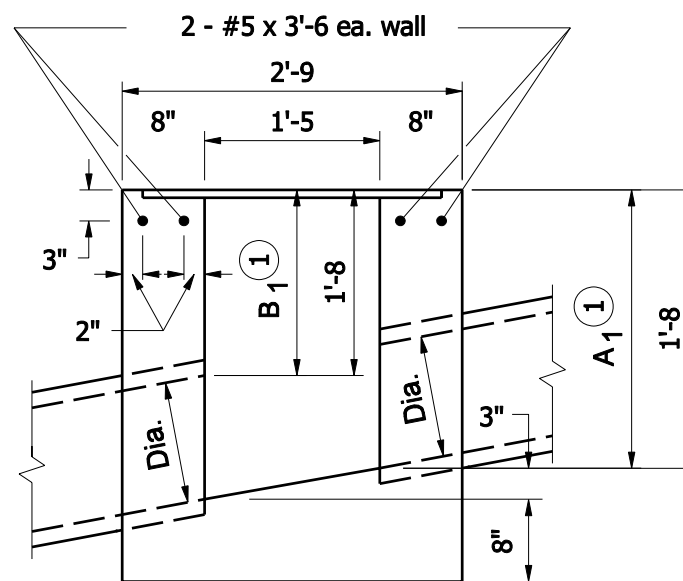
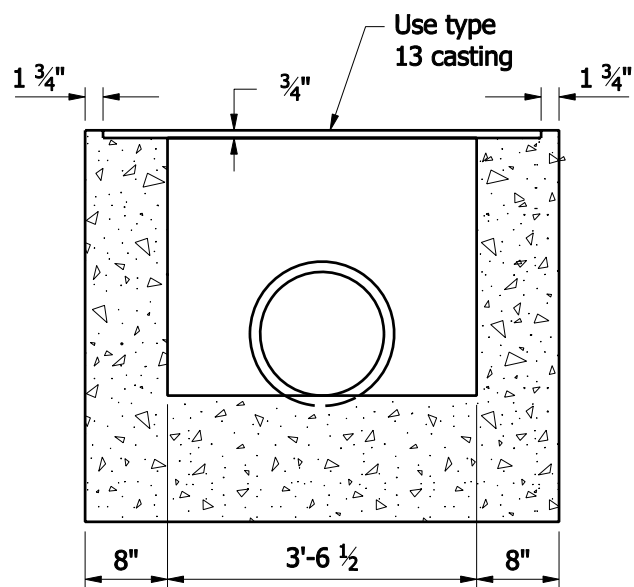
SECTION

GENERAL NOTES

- ① If inlet pipe is required, A₁ and B₁ shall be increased or decreased 1'-0" as directed.
- ② 2" dia. pipe drain from bottom of curb to inlet. Aggregate to be placed around inlet end of pipe.
- ③ 3" min. dia. pipe to be kept open for drainage of subgrade or base until surface is placed.



SECTION A-A
INLET TYPE R (CONC.)



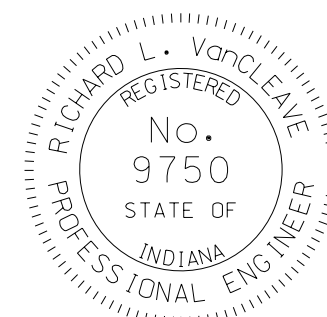
SECTION B-B

INDIANA DEPARTMENT OF TRANSPORTATION

INLET TYPE M & R

SEPTEMBER 2008

STANDARD DRAWING NO. E 720- INST-07



DESIGN STANDARDS ENGINEER

/s/ Richard L. VanCleave 09/02/08
DESIGN STANDARDS ENGINEER DATE

/s/ Mark A. Miller 09/02/08
CHIEF HIGHWAY ENGINEER DATE