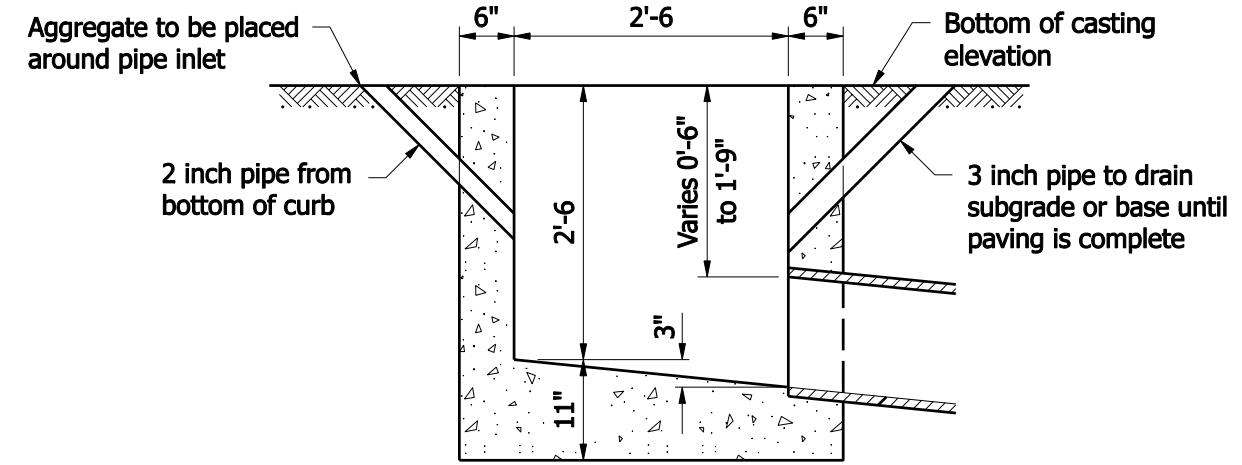
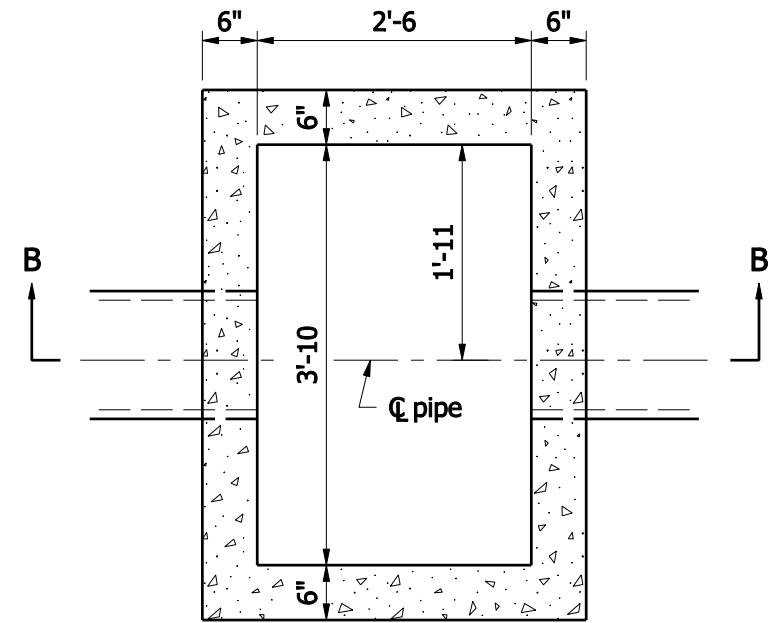


PLAN

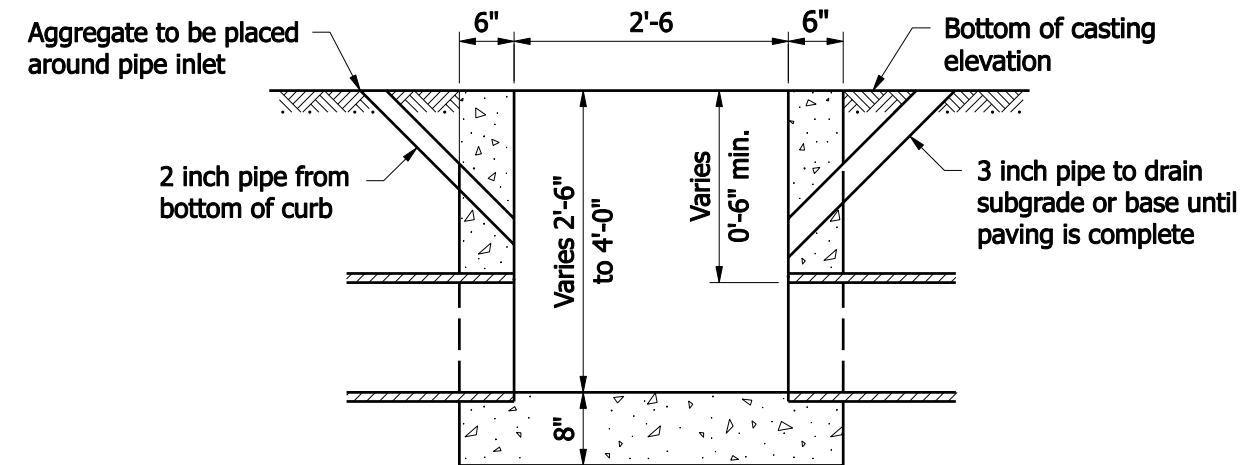


SECTION A-A

INLET-TYPE B



PLAN



SECTION B-B

INLET-TYPE C

INDIANA DEPARTMENT OF TRANSPORTATION	
INLET TYPE B AND C	
SEPTEMBER 2008	
STANDARD DRAWING NO. E 720- INST-02	
	<i>/s/ Richard L. VanCleave</i> 09/02/08 DESIGN STANDARDS ENGINEER      DATE
	<i>/s/ Mark A. Miller</i> 09/02/08 CHIEF HIGHWAY ENGINEER      DATE
DESIGN STANDARDS ENGINEER	