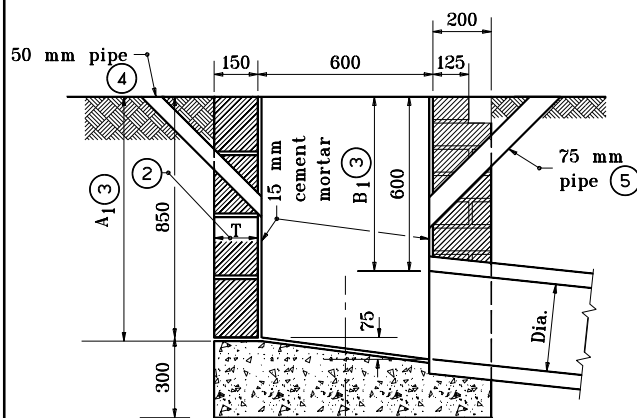
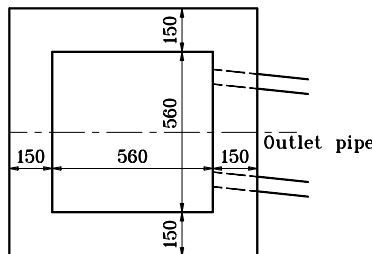
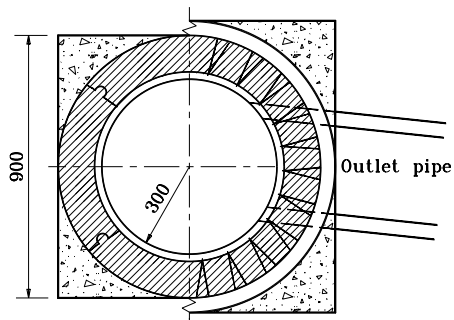


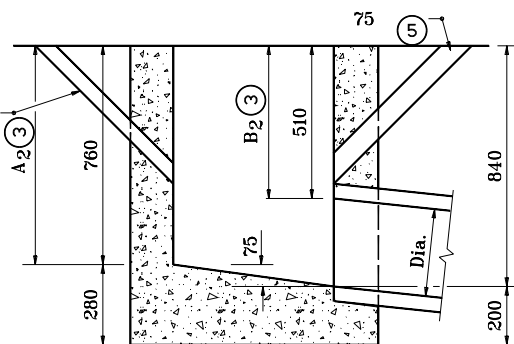
GENERAL NOTES

1. Brick, block, or concrete may be used.
- ② T = 200 for brick structure
T = 150 for segmental block structure
- ③ In special cases or where inlet pipe is required, A₁, B₁, A₂, and B₂ shall be increased or decreased 300 mm, as directed.
- ④ 50 pipe drain from bottom of curb to inlet. Aggregate to be placed around inlet end of pipe.
- ⑤ 75 min. dia. pipe to be kept open for drainage of subgrade or base until surface is placed.



BRICK OR BLOCK

④ 50 mm pipe



CONCRETE

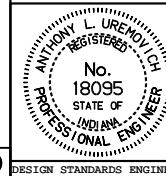
All dimensions are in mm unless otherwise specified.

INDIANA DEPARTMENT OF TRANSPORTATION

INLET TYPE A

APRIL 1995

STANDARD DRAWING NO. 720-INST-01



/s/ Anthony L. Uremovich 4-03-95
DESIGN STANDARDS ENGINEER DATE

/s/ Donald W. Lucas 4-03-95
CHIEF HIGHWAY ENGINEER DATE

Source Sheet: MD