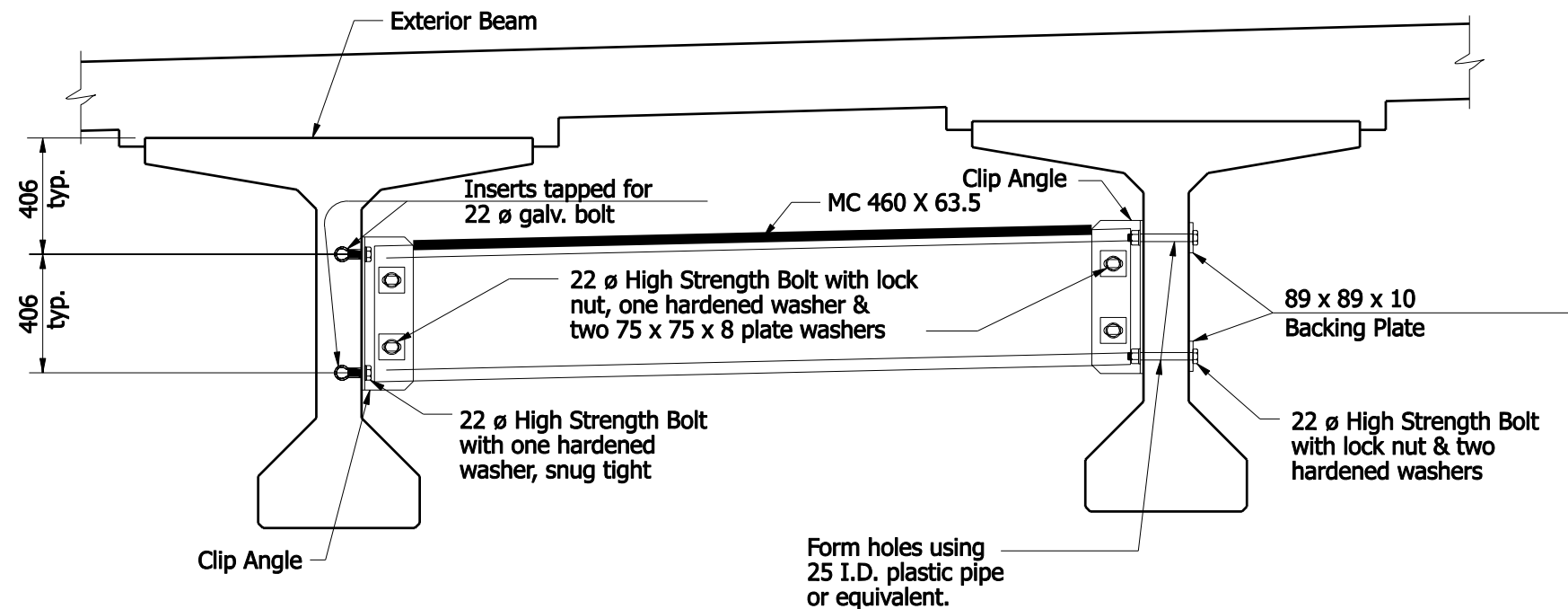


INTERMEDIATE DIAPHRAGM
Typical for Square Structure



INTERMEDIATE DIAPHRAGM
Typical for Skewed Structure

NOTES:

1. See Standard Drawing 707-SDPC-04 for connection details.

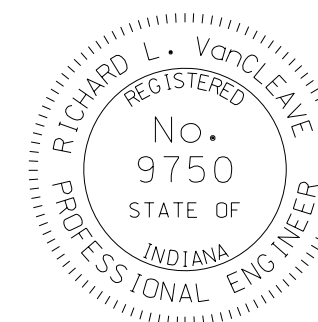
All Dimensions are in mm unless otherwise specified.

INDIANA DEPARTMENT OF TRANSPORTATION

STEEL DIAPHRAGMS
INDIANA BULB-TEES, 1372-mm DEPTH

SEPTEMBER 2007

STANDARD DRAWING NO. 707-SDPC-03



DESIGN STANDARDS ENGINEER

/s/ Richard L. VanCleave 09/04/07
DESIGN STANDARDS ENGINEER DATE

/s/ Mark A. Miller 09/04/07
CHIEF HIGHWAY ENGINEER DATE