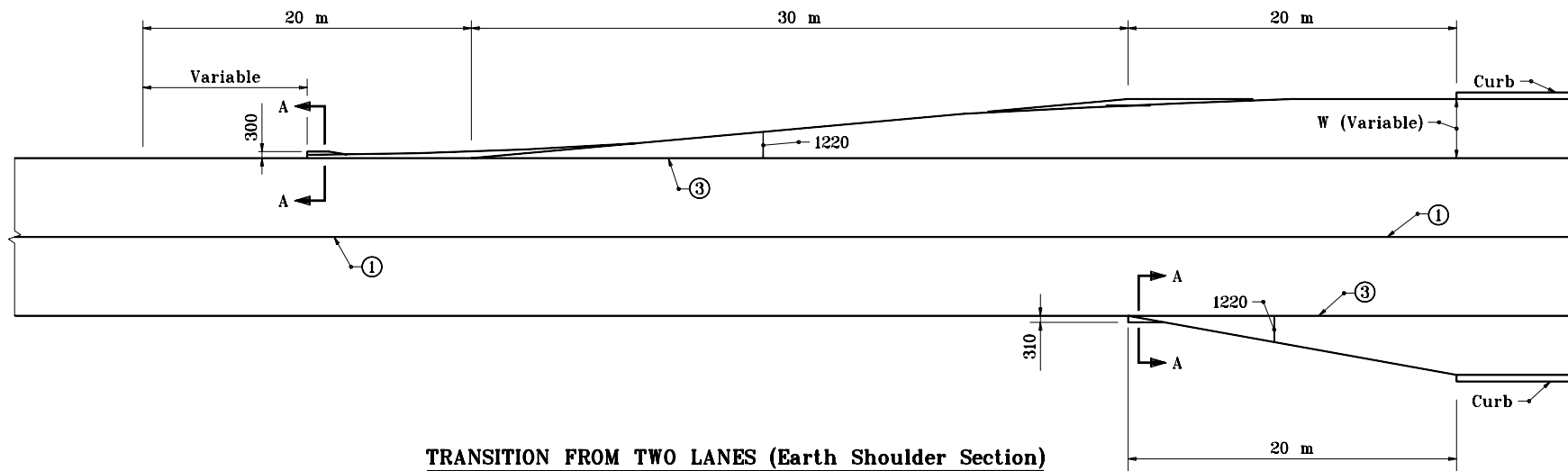


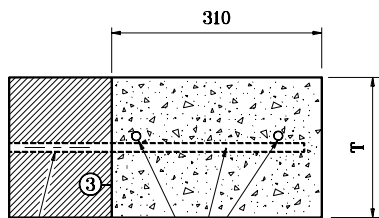
**LEGEND**

- ① Longitudinal joint
- ③ Longitudinal construction joint
- T = Nominal pavement thickness

Curve data variable  
except tangent length = 15.240 m



**TRANSITION FROM TWO LANES (Earth Shoulder Section)  
TO TWO LANES (Curb Section)**



Omit dowel bars where  
pavement is in place.

#19 Bars

**SECTION A-A**

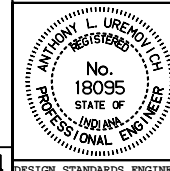
All dimensions are in mm unless otherwise specified.

INDIANA DEPARTMENT OF TRANSPORTATION

**TRANSITION OF EARTH  
SHOULDER TO CURB SECTION**

SEPTEMBER 1997

STANDARD DRAWING NO. 605-TSCS-01



/s/ Anthony L. Uremovich 9-01-97  
DESIGN STANDARDS ENGINEER DATE

/s/ Donald W. Lucas 9-01-97  
CHIEF HIGHWAY ENGINEER DATE

Source Sheet: M11