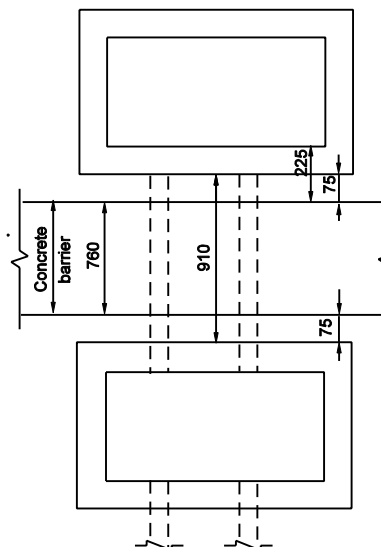
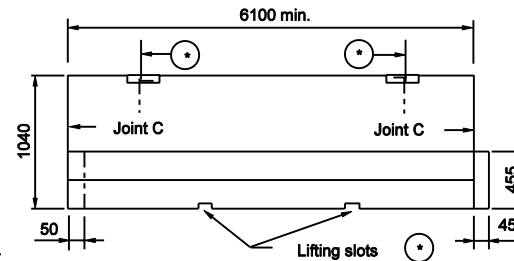


SECTION A-A



SECTION B-B



SIDE VIEW OF PRECAST SECTION

- * Precast concrete barrier shall have threaded inserts cast into the top of each section, a minimum of 6 mm below the surface, and embedded to a depth sufficient for safe lifting of the section.
- Lifting slots will be permitted in addition to the inserts. The dimensions and locations of these slots may be adjusted to accommodate variations in handling equipment.

GENERAL NOTES :

1. See Standard Drawing 602-CCMB-02 for joint details.
2. Cast-in-place or slip-formed concrete barrier shall have a joint type A at 3000 mm from each end of a median bridge pier or bent. The maximum spacing between type A joints shall be 120 m. Type A joint shall be placed at the end of each work period pour.
3. Each inlet type H includes two inlet boxes, the connector pipe between the inlet boxes, and two type 5 castings.
4. Type B joint shall be located and spaced as shown.
5. See Standard Drawings 720-ICCA-01 to E 720-ICCA-03 for casting type 5 details.
6. Concrete shoulder or pavement between type 5 casting and concrete barrier wall.
7. See Standard Drawing 720-INST-05B for information regarding inlet indicators.

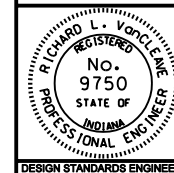
All Dimension are in mm unless otherwise specified

INDIANA DEPARTMENT OF TRANSPORTATION

**CONCRETE BARRIER
DRAIN AND JOINT PLACEMENT**

MARCH 2003

STANDARD DRAWING NO. 602-CCMB-01



/s/ Richard L. VanCleave 3-03-03
DESIGN STANDARDS ENGINEER DATE

/s/ Richard K. Smutzer 3-03-03
CHIEF HIGHWAY ENGINEER DATE

DESIGN STANDARDS ENGINEER