
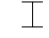



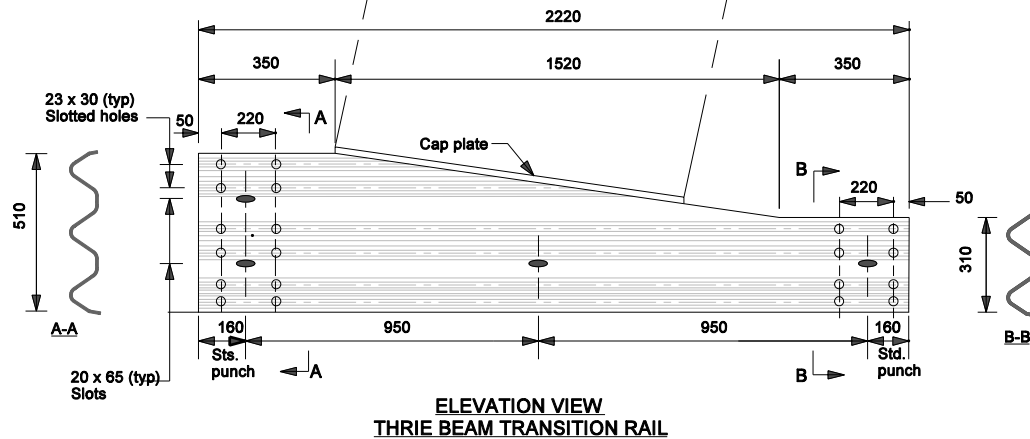
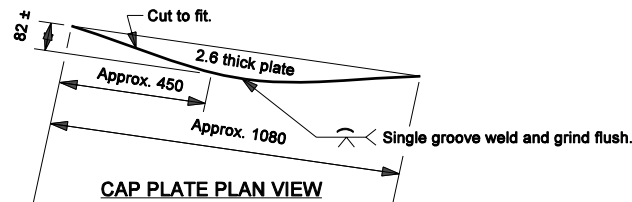
**THRIE BEAM TO W-BEAM GUARDRAIL TRANSITION**

**LEGEND:**

-  - W 150 x 14 Post
-  - W 360 x 32 Blockout
-  - Approved W-Beam Blockout.

**Notes:**

1. For Thrie Beam Guardrail details, see Standard Drawing 601-MTGR-01.
2. For W-Beam rail details, see Standard Drawing 601-WBGC-01
3. For W-Beam Guardrail assembly details, see Standard Drawings 601-WBGA-01 thru -03.
4. Slope on Thrie Beam Transition shall be reversed when thrie beam to W-beam guardrail relative orientation is opposite to that shown hereon.

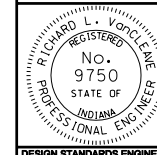


All Dimension are in mm unless otherwise specified

INDIANA DEPARTMENT OF TRANSPORTATION

**W-BEAM GUARDRAIL TO THRIE BEAM GUARDRAIL TRANSITION, WGT**  
MARCH 2005

STANDARD DRAWING NO. 601-TWGT-01



/s/ Richard L. VanCleave 3-01-05  
DESIGN STANDARDS ENGINEER DATE

/s/ Richard K. Smutzer 3-01-05  
CHIEF HIGHWAY ENGINEER DATE

DESIGN STANDARDS ENGINEER