

### NOTES

- ① Bar spacing shall be 48 c. to c. minimum and 60 c. to c. maximum.
- ② The dimensions of the angle iron frame shall be as shown except that the A dimension may vary according to type of grating used.
- ③ For Section A-A, Section B-B see Standard Drawing 720-INST-08 .

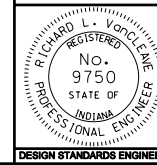
All Dimension are in mm unless otherwise specified

INDIANA DEPARTMENT OF TRANSPORTATION

## STEEL GRATING TYPE 12 FRAME AND GRATE

SEPTEMBER 2005

STANDARD DRAWING NO. 720-ICCA-10



/s/ Richard L. VanCleave 9-01-05  
DESIGN STANDARDS ENGINEER DATE

/s/ Richard K. Smutzer 9-01-05  
CHIEF HIGHWAY ENGINEER DATE

DESIGN STANDARDS ENGINEER