

DETAILS FOR "O"

GENERAL NOTES

1. The top edge of the word ONLY shall be located in advance of the back edge of the lane indication arrow, at least 4 times the height of the characters for posted speed \leq 45 mph but not more than 10 times the height of the characters for posted speed $>$ 45 mph
2. Horizontal strokes are 410 wide. Vertical strokes are 100 mm wide.

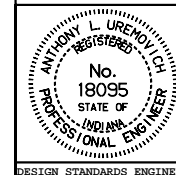
All dimensions are in mm unless otherwise specified.

INDIANA DEPARTMENT OF TRANSPORTATION

TRANSVERSE MARKINGS

JANUARY 2000

STANDARD DRAWING NO. **808-MKPM-03**



/s/ Anthony L. Uremovich 1-03-00
DESIGN STANDARDS ENGINEER DATE

/s/ Firooz Zandi 1-03-00
CHIEF HIGHWAY ENGINEER DATE

DESIGN STANDARDS ENGINEER