

**DETAIL F**  
**TYPICAL GROUND ROD CONNECTION**

**LEGEND**

- ⊙ — Grounding post
- — Self insulated splicer (insulating link)
- — Unfused connector
- ⊠ — Fused connector
- ▣ — Compression connector

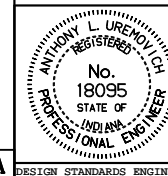
All dimensions are in mm unless otherwise specified.

INDIANA DEPARTMENT OF TRANSPORTATION

LIGHTING WIRING DETAILS

JANUARY 1996

STANDARD DRAWING NO. 807-LTRW-04



/s/ Anthony L. Uremovich 1-02-96  
DESIGN STANDARDS ENGINEER DATE

/s/ Donald W. Lucas 1-02-96  
CHIEF HIGHWAY ENGINEER DATE

Source Sheet: MT 6A