

Power cable disconnected
in tower

Junction box on luminaire
ring in lowered position

Auxiliary luminaire
connector

2P, 30A, 480V
circuit breaker

Strain relief
connectors

4/C #10 AWG Copper
insulated electrical
cable to junction box
on luminaire ring

600 volt 30 amp rated
electrical plug-moisture
resistant

4/C #10 Flexible cable
or 4-#10 strand wire
in flexible conduit

Bonding plate

Multiple compression fitting

Insulating link

Ground

DETAIL

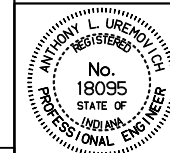
All dimensions are in mm unless otherwise specified.

INDIANA DEPARTMENT OF TRANSPORTATION

**HIGHWAY ILLUMINATION
TOWER BOTTOM LATCH**

MARCH 1995

STANDARD DRAWING NO. 807-LTHI-02



/s/ Anthony L. Uremovich 3-01-95
DESIGN STANDARDS ENGINEER DATE

/s/ Donald W. Lucas 3-01-95
CHIEF HIGHWAY ENGINEER DATE

Source Sheet: NONE

DESIGN STANDARDS ENGINEER