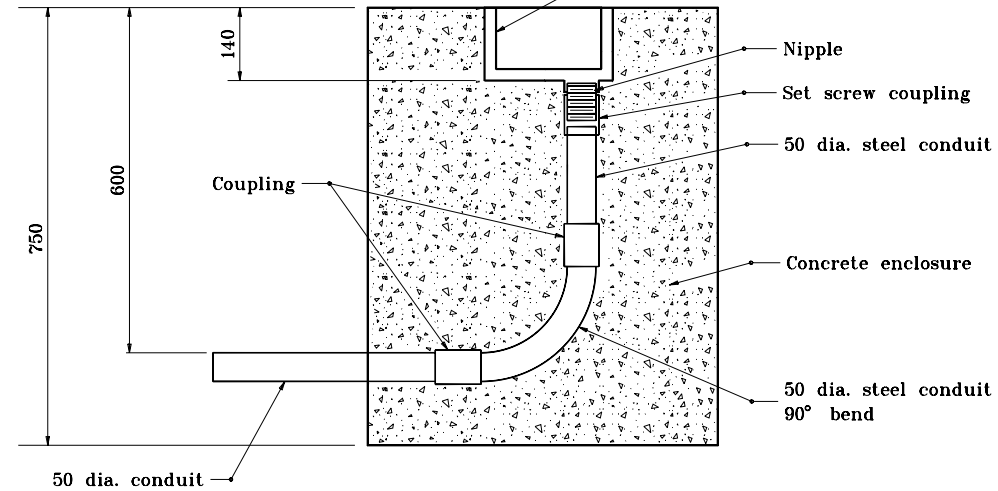


Concrete enclosure



SECTION A-A

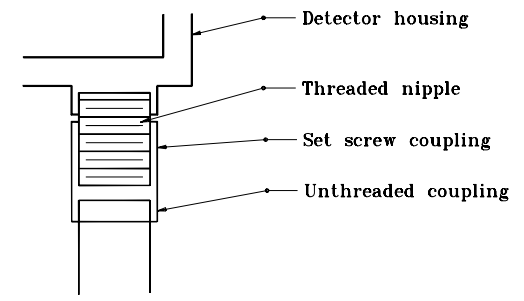
50 dia. conduit

Detector housing ①

Nipple
 Set screw coupling
 50 dia. steel conduit
 Concrete enclosure
 50 dia. steel conduit
 90° bend

GENERAL NOTES

① See Standard Drawing 805-SGDH-02 for detector housing detail.

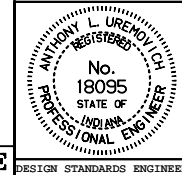


**DETECTOR HOUSING
 COUPLING DETAIL**

All dimensions are in mm unless otherwise specified.

INDIANA DEPARTMENT OF TRANSPORTATION
INSTALLATION DETAIL
DETECTOR HOUSING
 SEPTEMBER 1998

STANDARD DRAWING NO. **805-SGDH-01**



/s/ Anthony L. Uremovich 9-01-98
 DESIGN STANDARDS ENGINEER DATE

/s/ Donald W. Lucas 9-01-98
 CHIEF HIGHWAY ENGINEER DATE

Source Sheet: NONE