

GENERAL NOTES

- ① On metal signal heads grounding wire shall connect each signal head and the bottom grounding bushing of the assembly to the grounding lug.
2. Single conductor (hookup) shall be used from slipfitter terminal block to signal indications.
- ③ See Standard Drawing 805-SGGR-03 for grounding lug details.

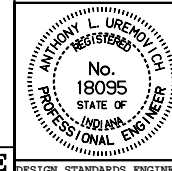
All dimensions are in mm unless otherwise specified.

INDIANA DEPARTMENT OF TRANSPORTATION

PEDESTAL MOUNTED SIGNAL INDICATIONS

SEPTEMBER 1998

STANDARD DRAWING NO. 805-SGCO-05



/s/ Anthony L. Uremovich 9-01-98
DESIGN STANDARDS ENGINEER DATE

/s/ Donald W. Lucas 9-01-98
CHIEF HIGHWAY ENGINEER DATE

Source Sheet: NONE

DESIGN STANDARDS ENGINEER