

**GENERAL NOTES**

1. Nut shall be tightened sufficiently so that the sign is held firmly against the post. However, there shall be no deformation of aluminum sheeting or twisting or damage to the reflective sheeting.
2. Signs shall be fastened to the posts with bolts, metal and nylon washers and locknut.
3. A nylon washer and a metal washer shall be placed between each bolt head and the face of the sign.
4. Flanged channel posts are as specified and as shown on the plans.
5. The sheet signs shall be punched or drilled for mounting such that the vertical hole spacing is in equal increments of millimeters.
6. See Std. Dwg. No. 802-SNPL-02 for mounting height and lateral locations of signs.
7. Splicing of flanged channel post will not be permitted.
8. Bolt can either be stainless steel or galvanized steel bolt.

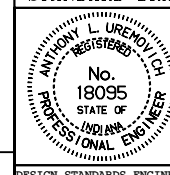
All dimensions are in mm unless otherwise specified.

INDIANA DEPARTMENT OF TRANSPORTATION

**MISC. SIGN DETAILS  
GENERAL NOTES**

MAY 1999

STANDARD DRAWING NO. 802-SNGS-08



*/s/ Anthony L. Uremovich* 5-03-99  
DESIGN STANDARDS ENGINEER DATE

*/s/ Donald W. Lucas* 5-03-99  
CHIEF HIGHWAY ENGINEER DATE

Source Sheet: MT4

DESIGN STANDARDS ENGINEER