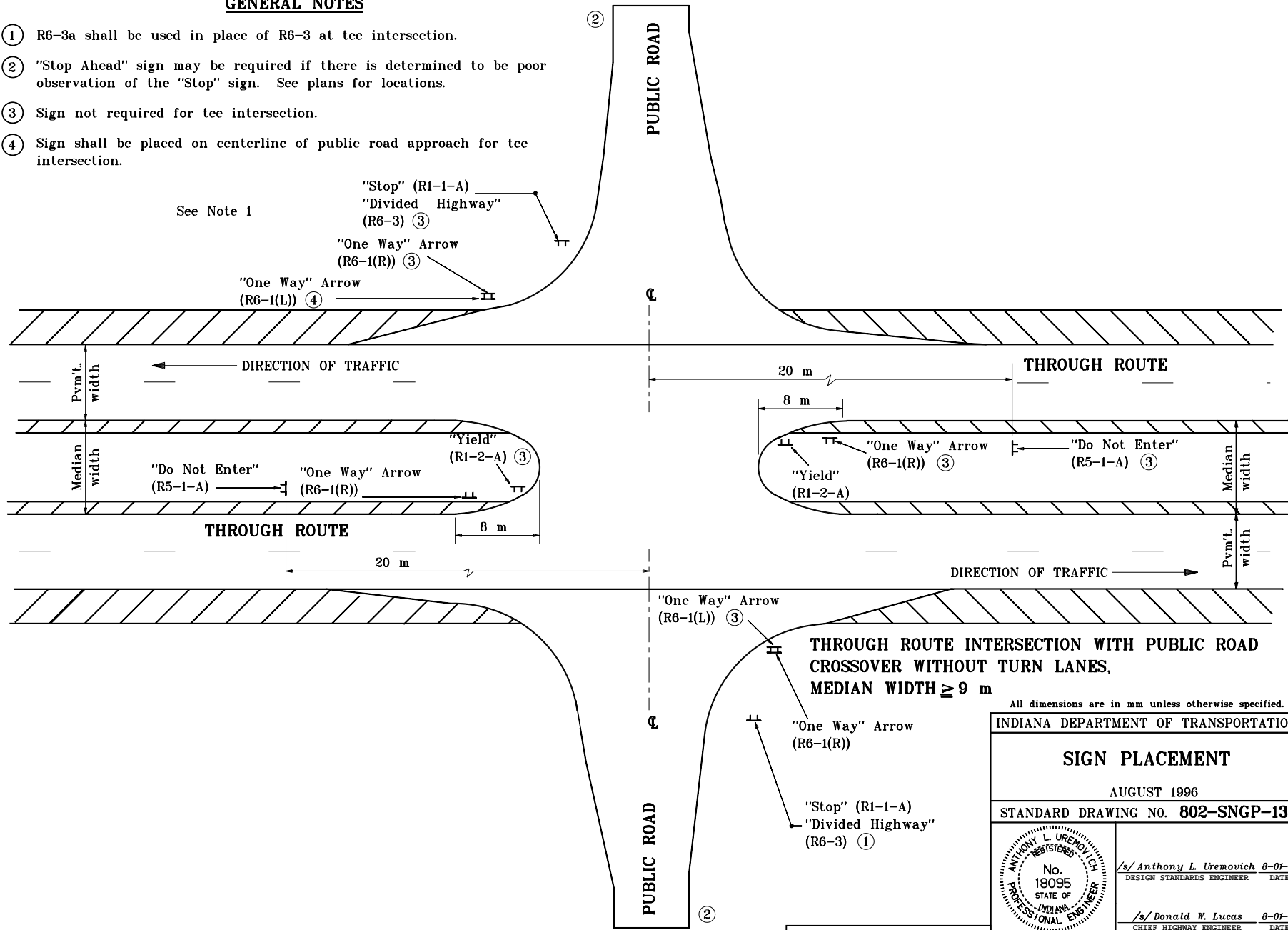


GENERAL NOTES

- ① R6-3a shall be used in place of R6-3 at tee intersection.
- ② "Stop Ahead" sign may be required if there is determined to be poor observation of the "Stop" sign. See plans for locations.
- ③ Sign not required for tee intersection.
- ④ Sign shall be placed on centerline of public road approach for tee intersection.



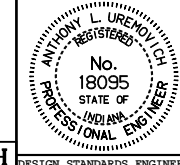
All dimensions are in mm unless otherwise specified.

INDIANA DEPARTMENT OF TRANSPORTATION

SIGN PLACEMENT

AUGUST 1996

STANDARD DRAWING NO. 802-SNGP-13



/s/ Anthony L. Uremovich 8-01-96
DESIGN STANDARDS ENGINEER DATE

/s/ Donald W. Lucas 8-01-96
CHIEF HIGHWAY ENGINEER DATE

Source Sheet: MT9H