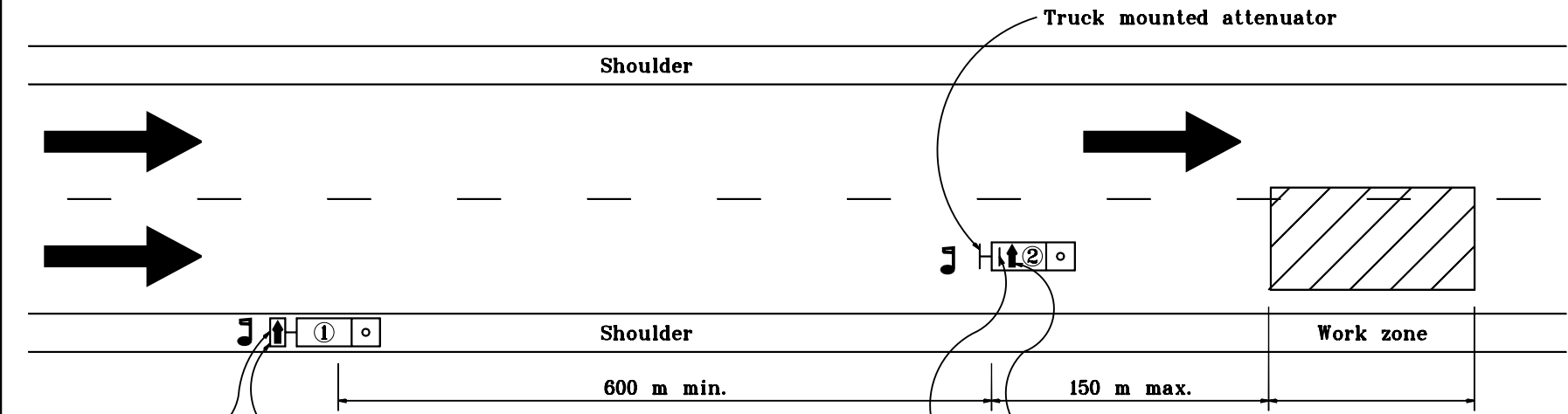


MULTI-LANE DIVIDED HIGHWAY



Truck mounted flashing arrow sign

RIGHT LANE CLOSED AHEAD
 XW20 - 5 (R)
 mounted to bottom of flashing arrow sign

LEGEND

- J Flagger
- Truck which may be a pick-up
- Truck which shall be 10900 kg or greater gross vehicular weight

750 x 1200
 Roof mounted flashing arrow sign

 XW4-2 (R)
 Mounted on rear of truck

LONGITUDINAL BUFFER LENGTH SHOWN ON STANDARD DRAWING 801-TCFO-01

Posted Speed Limit, mph	Length, m
30 or lower	25
35	35
40	55
45	70
50	85
55	105
60	125
65	150

GENERAL NOTES

1. Flagger shall be used while trucks are stopped.
2. Strobe lights will be required on all vehicles.
3. Distances shown are approximate and may be adjusted as directed.
4. Truck mounted attenuator shall be designed to attenuate impacts by a pickup truck of 2000 kg gross vehicular mass st km/h.

All dimensions are in mm unless otherwise specified.

INDIANA DEPARTMENT OF TRANSPORTATION
MAINTENANCE OF TRAFFIC FOR REFLECTOR REPLACEMENT
 MAY 2000
 STANDARD DRAWING NO. 801-TCFO-03

	/s/ Anthony L. Uremovich 5-01-00 <small>DESIGN STANDARDS ENGINEER DATE</small>
	/s/ Pirooz Zandi 5-01-00 <small>CHIEF HIGHWAY ENGINEER DATE</small>