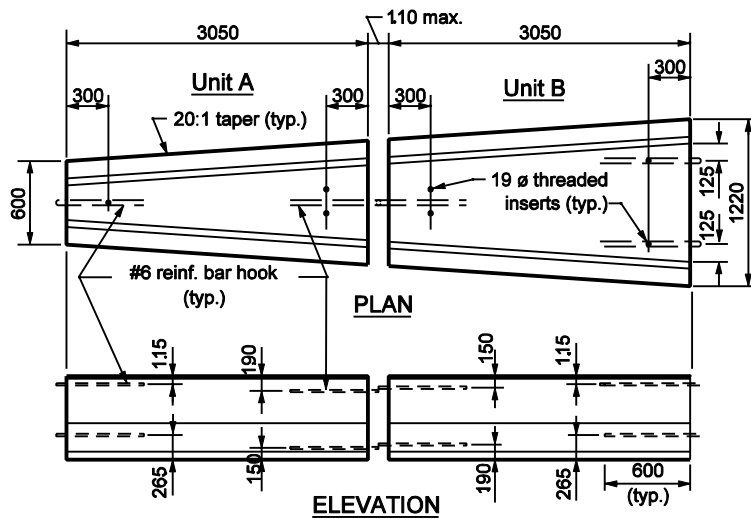


DOUBLE TAPER END SECTION



DOUBLE TAPER END SECTION ASSEMBLY
 (Showing location of inserts and bar hooks)

NOTES :

1. For connection details see Standard Drawing 801-TCCB-02.
2. For details of barrier anchorage see Standard Drawing 801-TCCB-04.
3. Extreme ends of the double taper end assembly require a 130 ø bolt x 700 (100 min. thread, hex head and hex nut) for connecting to adjacent temporary concrete barriers.
4. For details of connection between Units A and B, see Standard Drawing 801-TCCB-02.

All Dimension are in mm unless otherwise specified

INDIANA DEPARTMENT OF TRANSPORTATION

**TEMPORARY CONCRETE BARRIER
 DOUBLE TAPER END SECTION**

SEPTEMBER 2002

STANDARD DRAWING NO. 801-TCCB-03

	/s/ Richard L. VanCleave	9-03-02
	DESIGN STANDARDS ENGINEER	DATE
	/s/ Richard K. Smutzer	9-03-02
	CHIEF HIGHWAY ENGINEER	DATE

DESIGN STANDARDS ENGINEER