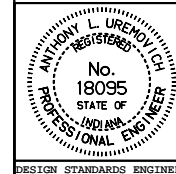


┌ D-1 or D-3 Delineator
 ┆ D-1 Delineator (Bi-directional)

All dimensions are in mm unless otherwise specified.

INDIANA DEPARTMENT OF TRANSPORTATION
 PLACEMENT OF TRAFFIC CONTROL DEVICES
 AT NARROW BRIDGE ON TWO LANE ROAD
 JANUARY 2000

STANDARD DRAWING NO. 808-MKNB-01



/s/ Anthony L. Uremovich 1-03-00
 DESIGN STANDARDS ENGINEER DATE

/s/ Firooz Zandi 1-03-00
 CHIEF HIGHWAY ENGINEER DATE

Aborted Pass Maneuver Distance

85th Percentile Speed, km/h (mph)	Distance (APM-B)
50 (30)	110 m
60 (35)	140 m
60 (40)	150 m
70 (45)	170 m
80 (50)	180 m
90 (55)	200 m
100 (60)	200 m

GENERAL NOTES

- The minimum length of the no passing zone at narrow bridges if marked, shall be the distance APM-B. If the 85th percentile speed is not known add 10 km/h (5 mph) to the posted limit and use the appropriate distance APM-B.