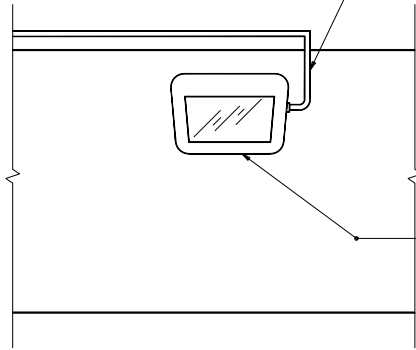
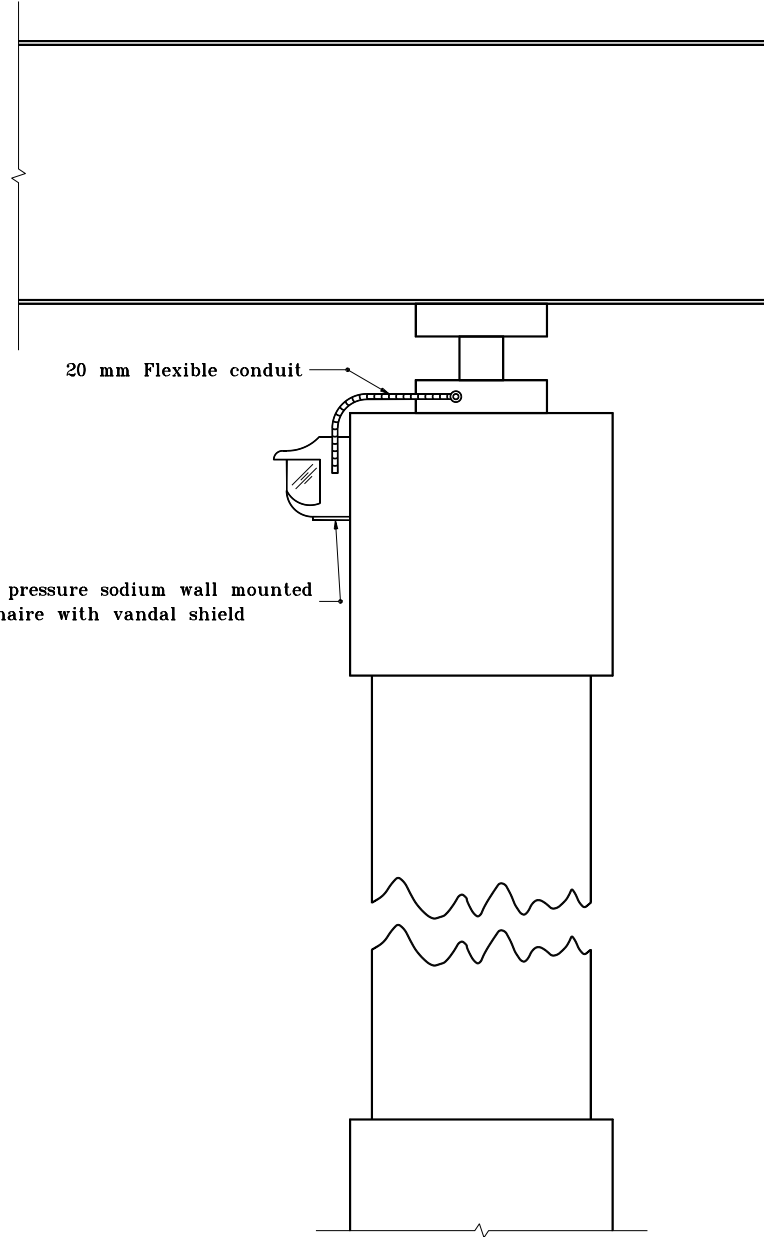


Conduit shall enter underpass luminaire from the side, except for pendant mounting



High pressure sodium wall mounted luminaire with vandal shield

20 mm Flexible conduit



All dimensions are in mm unless otherwise specified.

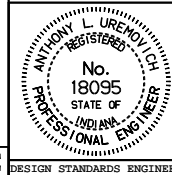
INDIANA DEPARTMENT OF TRANSPORTATION

UNDERPASS LIGHTING DETAILS

WALL MOUNTING

MARCH 1995

STANDARD DRAWING NO. 807-LTUP-03



/s/ Anthony L. Uremovich 3-01-95
DESIGN STANDARDS ENGINEER DATE

/s/ Donald W. Lucas 3-01-95
CHIEF HIGHWAY ENGINEER DATE

Source Sheet: MT6E