

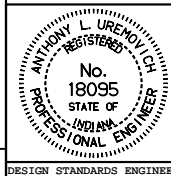
**REQUIRES TWO POLE BANDS AT EACH POSITION
ON POLE (SIX BANDS PER POLE)**

All dimensions are in mm unless otherwise specified.

INDIANA DEPARTMENT OF TRANSPORTATION

**POLE BAND FOR
SIGNAL STEEL STRAIN POLE**
SEPTEMBER 1998

STANDARD DRAWING NO. **805-SGSP-03**



/s/ Anthony L. Uremovich 9-01-98
DESIGN STANDARDS ENGINEER DATE

/s/ Donald W. Lucas 9-01-98
CHIEF HIGHWAY ENGINEER DATE

Source Sheet: **NONE**

DESIGN STANDARDS ENGINEER