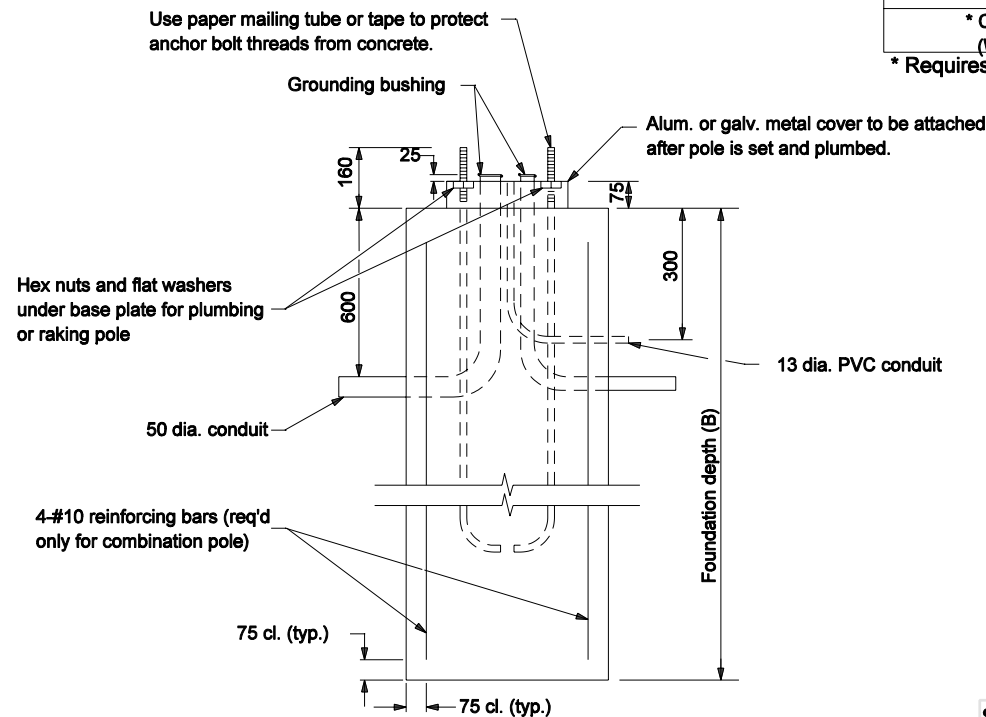


### GENERAL NOTES

1. Top 150 of foundation may be squared.
- (2) A round foundation may be supplied in lieu of square using the following equivalent (A) dimensions:  
760 Square = 915 Round  
915 Square = 1060 Round
- (3) See Base Plate Detail on Standard Drawing 805-SGMA-05.
- (4) See Standard Drawing 805-SGMA-05 for Detail D.

SIGNAL CANTILEVER FOUNDATION DIMENSIONS		
ARM LENGTH (L), m	SQUARE (A)	FDN. DEPTH (B)
3.6, 4.6, 6.1, 7.6	760	2130
9.1, 10.7, 12.2	915	2440
All Twin Arms * Combination Pole (With Luminaire)	915	2440

\* Requires 4-#10 x 2350 as shown on foundation detail.



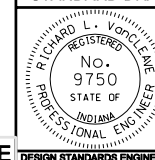
All Dimension are in mm unless otherwise specified

INDIANA DEPARTMENT OF TRANSPORTATION

### SIGNAL CANTILEVER FOUNDATION DETAIL

MARCH 2005

STANDARD DRAWING NO. 805-SGMA-03



/s/ Richard L. VarCleave 3-01-05  
DESIGN STANDARDS ENGINEER DATE

/s/ Richard K. Smutzer 3-01-05  
CHIEF HIGHWAY ENGINEER DATE

Source Sheet: NONE