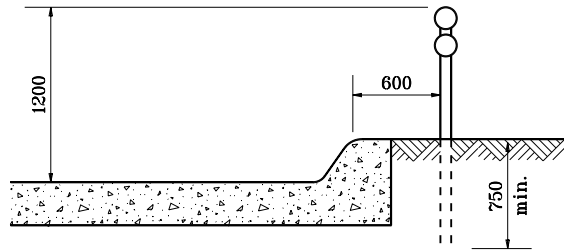
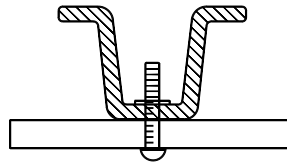


GENERAL NOTES

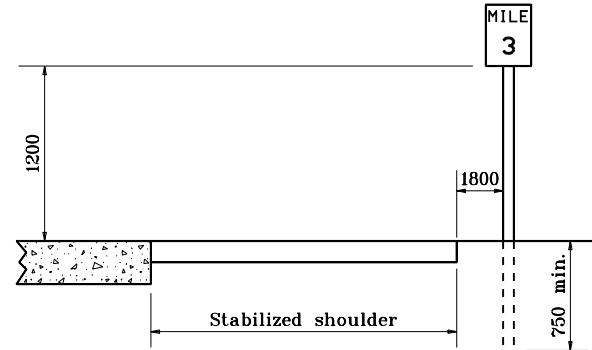
1. Post to be type A flange posts.
2. Mileposts shall be installed in accordance with Interstate Sign Manual.



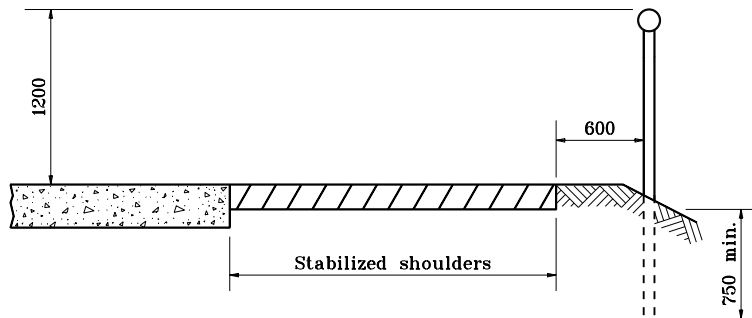
UNMOUNTABLE CURB SECTION



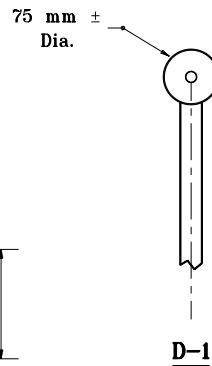
MOUNTING DETAIL



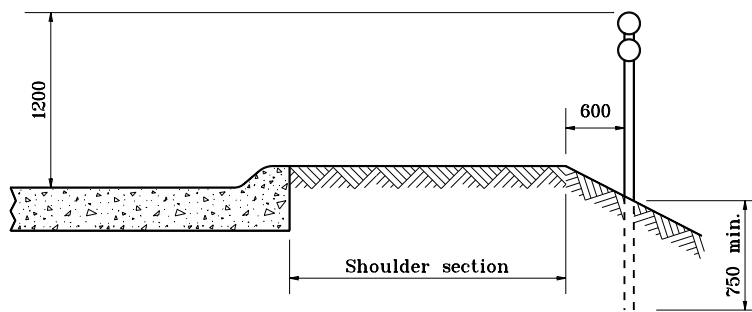
TYPICAL MILE or REFERENCE POST



SHOULDER SECTION



D-1

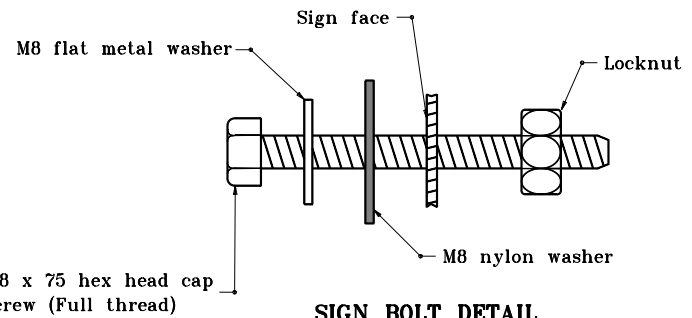


MOUNTABLE CURB SECTION



D-2

DELINEATOR DETAILS



SIGN BOLT DETAIL

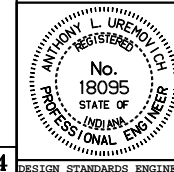
All dimensions are in mm unless otherwise specified.

INDIANA DEPARTMENT OF TRANSPORTATION

MISC. SIGN DETAILS

MARCH 1995

STANDARD DRAWING NO. 802-SNGS-07



/s/ Anthony L. Uremovich 3-01-95
DESIGN STANDARDS ENGINEER DATE

/s/ Donald W. Lucas 3-01-95
CHIEF HIGHWAY ENGINEER DATE

Source Sheet: **MT4**