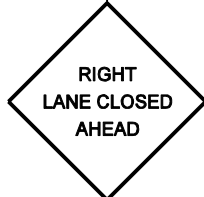
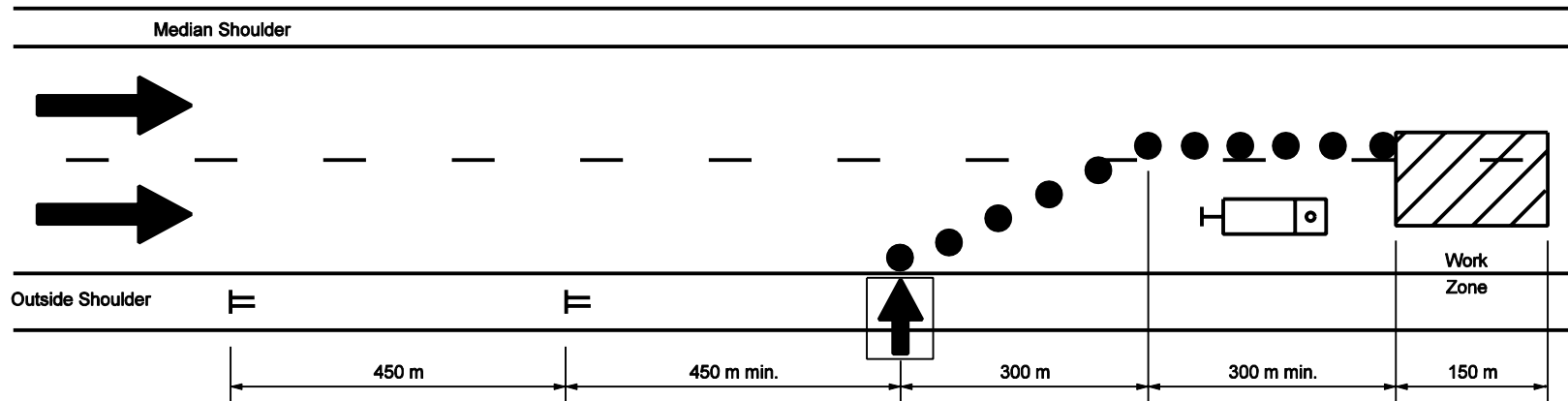
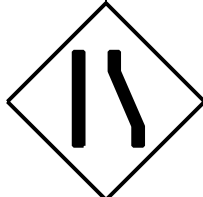


**MULTI-LANE DIVIDED HIGHWAY**



XW20-5 (R)  
(R or L)



XW4-2 (R)  
(R or L)

**GENERAL NOTES**

- Distances shown are approximate and may be adjusted as directed.
- Strobe lights will be required on all vehicles.
- See Standard Drawing 801-TCDV-01 for channelizing devices
- See Standard Drawing 801-TCDV-05 for sign mounting.



XW103-1  
Optional sign to be placed when directed.

- Lane closure length shall be a maximum of 5 km as directed by Engineer to meet field conditions.

**LEGEND**

Flashing Arrow Sign

Truck with truck mounted attenuator (24,000 GVW required)

Channelizing device

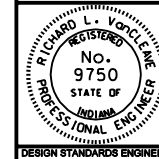
All Dimensions are in mm unless otherwise specified

INDIANA DEPARTMENT OF TRANSPORTATION

**MAINTENANCE OF TRAFFIC FOR RPM CASTING INSTALLATION**

SEPTEMBER 2002

STANDARD DRAWING NO. 801-TCTC-06



/s/ Richard L. VanCleave 9-03-02  
DESIGN STANDARDS ENGINEER DATE

/s/ Richard K. Smutzer 9-03-02  
CHIEF HIGHWAY ENGINEER DATE

DESIGN STANDARDS ENGINEER