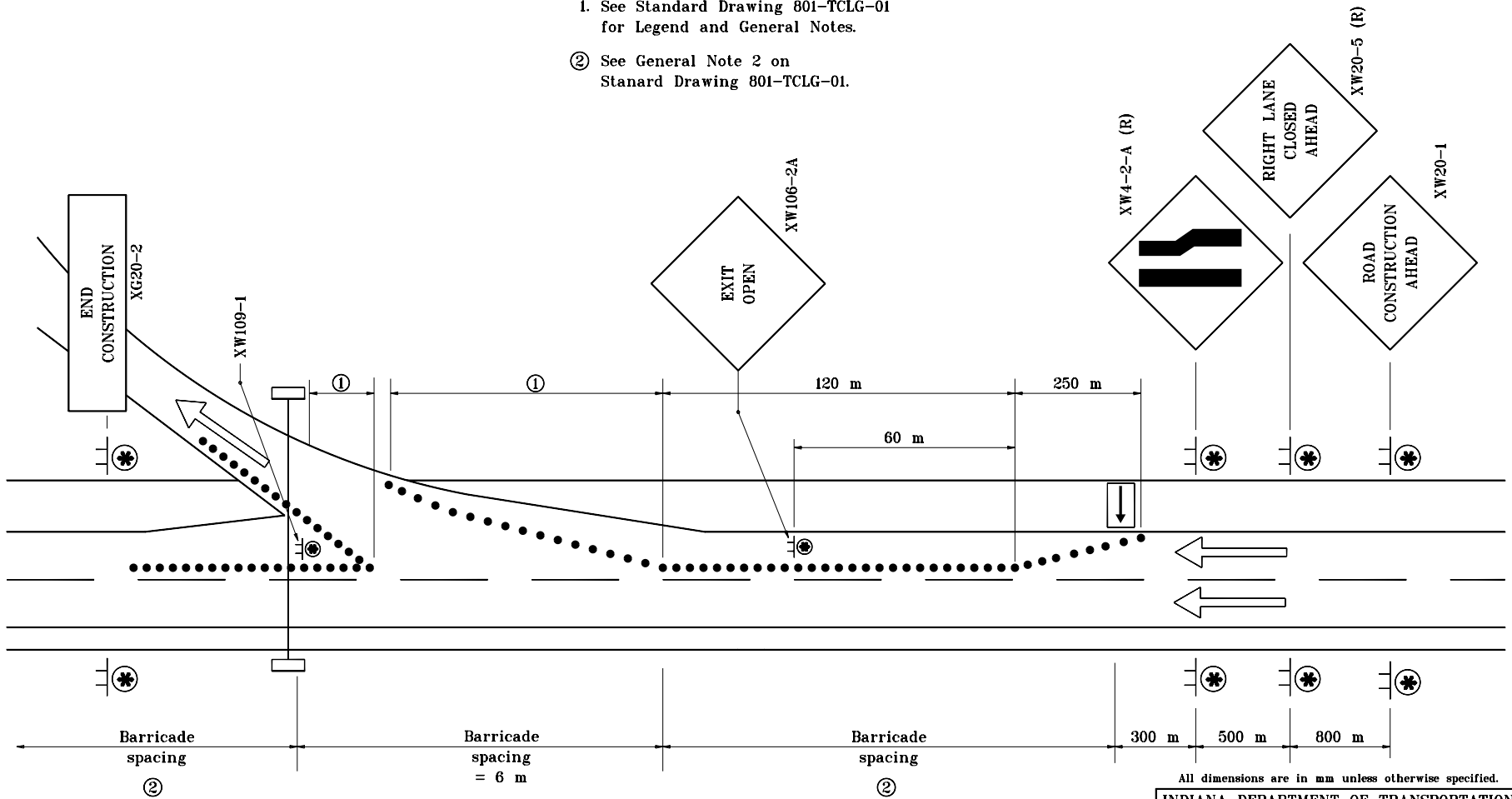


GENERAL NOTES

1. See Standard Drawing 801-TCLG-01 for Legend and General Notes.
- ② See General Note 2 on Standard Drawing 801-TCLG-01.



All dimensions are in mm unless otherwise specified.

MULTI-LANE DIVIDED HIGHWAY

INDIANA DEPARTMENT OF TRANSPORTATION	
TRAFFIC CONTROL FOR OVERHEAD SIGN INSTALLATION	
MAY 1998	
STANDARD DRAWING NO. 801-TCLC-15	
	/s/ Anthony L. Uremovich 5-01-98 DESIGN STANDARDS ENGINEER DATE
	/s/ Donald W. Lucas 5-01-98 CHIEF HIGHWAY ENGINEER DATE

Source Sheet: **MT9J**