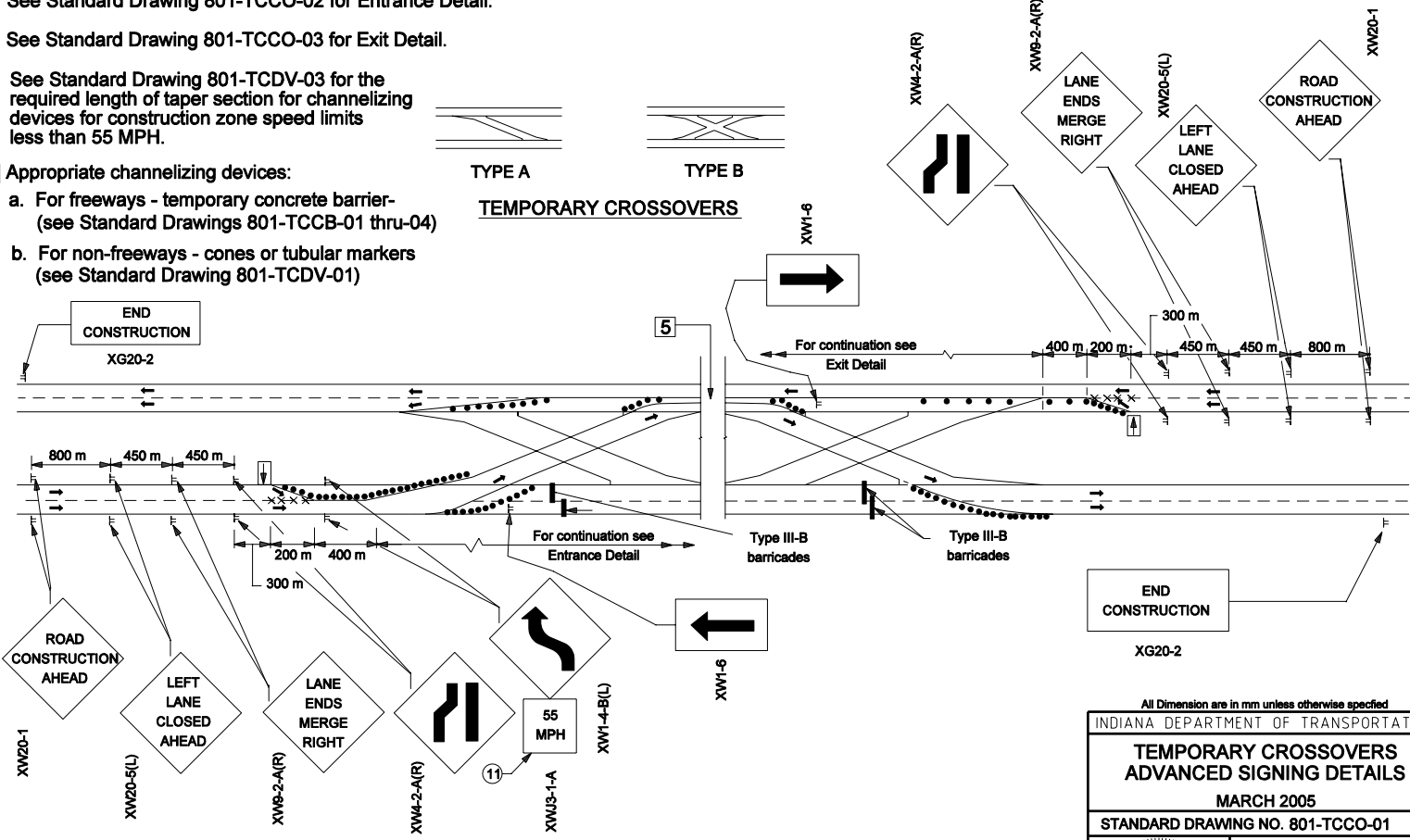
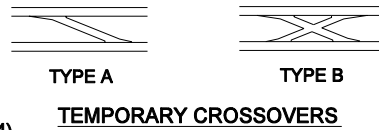


**NOTES**

1. See Standard Drawings 801-TCCO-02 and 801-TCLG-01 for additional general notes and legend.
2. See Standard Drawing 801-TCCO-02 for Entrance Detail.
3. See Standard Drawing 801-TCCO-03 for Exit Detail.
4. See Standard Drawing 801-TCDV-03 for the required length of taper section for channelizing devices for construction zone speed limits less than 55 MPH.
5. Appropriate channelizing devices:
  - a. For freeways - temporary concrete barrier- (see Standard Drawings 801-TCCB-01 thru-04)
  - b. For non-freeways - cones or tubular markers (see Standard Drawing 801-TCDV-01)

6. Area of Type A crossovers are shown on Standard Drawing 801-TCLG-01 and area of Type B crossover is shown on Standard Drawing 801-TCCO-05.



**ADVANCE AND ENDING SIGNING DETAIL**

All Dimension are in mm unless otherwise specified

INDIANA DEPARTMENT OF TRANSPORTATION

**TEMPORARY CROSSOVERS  
ADVANCED SIGNING DETAILS**

MARCH 2005

STANDARD DRAWING NO. 801-TCCO-01

	/s/ Richard L. VanCleave	3-01-05
	DESIGN STANDARDS ENGINEER	DATE
	/s/ Richard K. Smutzer	3-01-05
	CHIEF HIGHWAY ENGINEER	DATE