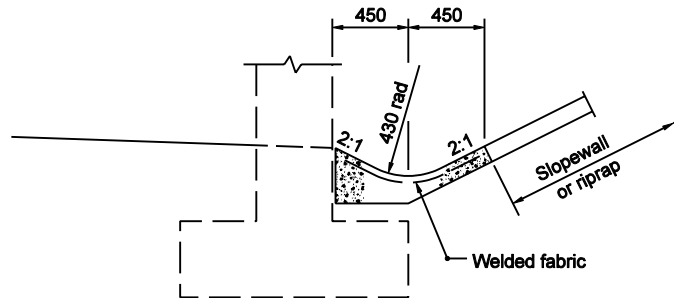
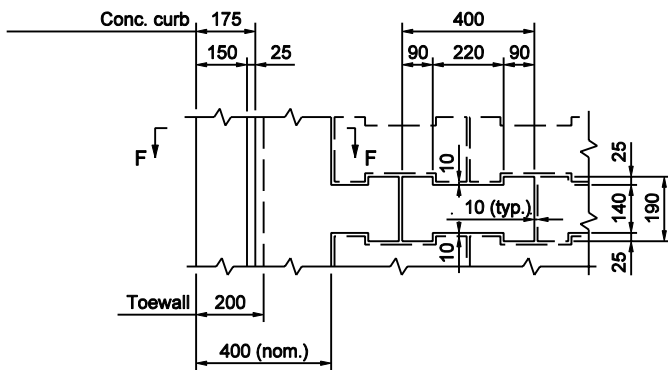


**SECTION THROUGH PRECAST RIPRAP**



**SECTION THROUGH PAVED DITCH AT TOE OF SLOPE**

(See layout on plans for location of paved ditch)



**PLAN - PRECAST CONCRETE RIPRAP**

**NOTES**

1. See Standard Drawing 616-SWRR-01 for Section F-F.
2. If riprap is specified, 300 hand-laid riprap or precast concrete riprap type A may be used.
- ③ Precast conc. riprap  
Type A: H = 195 mm (200 mm nom.)  
Type B: H = 95 mm (100 mm nom.)

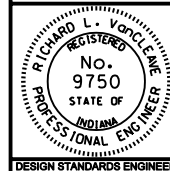
All Dimension are in mm unless otherwise specified

INDIANA DEPARTMENT OF TRANSPORTATION

**RIPRAP SLOPEWALL DETAILS**

SEPTEMBER 2003

STANDARD DRAWING NO. 616-SWRR-02



/s/ Richard L. VanCleave 9-02-03  
DESIGN STANDARDS ENGINEER DATE

/s/ Richard K. Smutzer 9-02-03  
CHIEF HIGHWAY ENGINEER DATE

DESIGN STANDARDS ENGINEER