

$$* = \frac{W-7200}{4}$$

$L = 18$ m

Type T 12 m \leq W $<$ 14 m

$L = 17$ m

Type U 14 m \leq W \leq 20 m

PLAN

NOTES :

1. See Standard Drawing 610-PRCO-01 for Legend and Section A-A.

All dimensions are in mm unless otherwise specified.

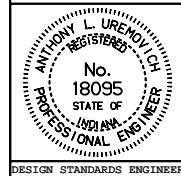
INDIANA DEPARTMENT OF TRANSPORTATION

PUBLIC ROAD CROSSOVERS

TYPE T & U

MAY 2000

STANDARD DRAWING NO. **610-PRCO-06**



/s/ Anthony L. Uremovich 5-01-00
DESIGN STANDARDS ENGINEER DATE

/s/ Firooz Zandi 5-01-00
CHIEF HIGHWAY ENGINEER DATE

DESIGN STANDARDS ENGINEER