

**GENERAL NOTES**

- ① See Standard Drawing 601-TTGB-02 for Lap Detail.
- ② See Standard Drawing 601-TBGC-01 for connection details.
3. See Standard Drawings 601-TTGB-03 through -05 for post and block details.

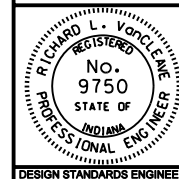
All Dimension are in mm unless otherwise specified

INDIANA DEPARTMENT OF TRANSPORTATION

**GUARDRAIL TRANSITION  
TYPE TGB**

MARCH 2003

STANDARD DRAWING NO. 601-TTGB-01



/s/ Richard L. VanCleave 3-03-03  
DESIGN STANDARDS ENGINEER DATE

/s/ Richard K. Smutzer 3-03-03  
CHIEF HIGHWAY ENGINEER DATE

DESIGN STANDARDS ENGINEER