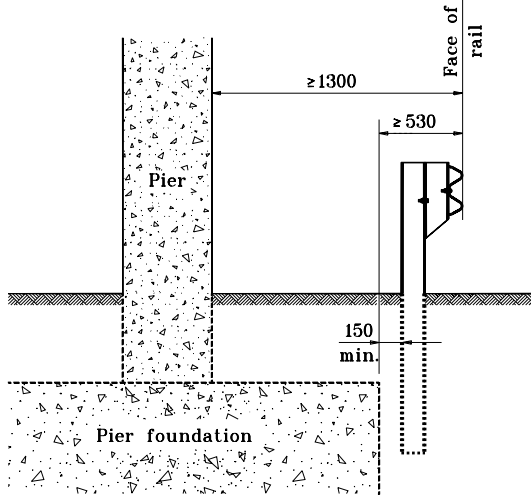


**GENERAL NOTES**

1. This sheet shall be used when W-beam guardrail is specified along a two-lane two-way roadway to shield the piers of overhead structures.
2. The required length of guardrail shall be determined in accordance with Tables P-1-1 and P-1-2, and shall be as shown on the plans.

Dimensions and details not shown on this sheet shall be as shown on the plans.



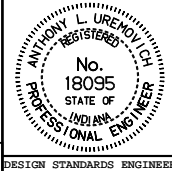
**Guardrail to Pier Clearance**

TABLE P-1-1			
Outside (Right Side) Shoulder Pier Approach Guardrail Lengths at Piers/Frame Bents $\leq 4.9$ m from Pavement Edge			
Design Speed (km/h)	Pier End Inside Clear Zone	Pier End Outside Clear Zone	Guardrail Pay Length (meters)
	Required Minimum Length (meters) in Advance of the Pier/Frame Bent End		
$\geq 80$	> of the rounded calculated length of need or 30	30	Required minimum length
$< 80$	> of the rounded calculated length of need or 15	15	minus 7.62 for GP transition

TABLE P-1-2			
Outside (Right Side) Shoulder Pier Approach Guardrail Lengths at Piers/Frame Bents $> 4.9$ m from Pavement Edge			
Design Speed (km/h)	Pier End Inside Clear Zone	Pier End Outside Clear Zone	Guardrail Pay Length (meters)
	Required Minimum Length (meters) in Advance of the Pier/Frame Bent End		
$\geq 80$	> of the rounded calculated length of need or 30	30	Required minimum length
$< 80$	> of the rounded calculated length of need or 15	15	plus length to shield pier face

All dimensions are in mm unless otherwise specified.

INDIANA DEPARTMENT OF TRANSPORTATION  
**ROADSIDE PIER PROTECTION GUARDRAIL**  
 SEPTEMBER 1997  
 STANDARD DRAWING NO. **601-RPPG-06**



/s/ Anthony L. Uremovich 9-01-97  
 DESIGN STANDARDS ENGINEER DATE

/s/ Donald W. Lucas 9-01-97  
 CHIEF HIGHWAY ENGINEER DATE