

**GUARDRAIL ASSEMBLY FOR COVER ≥ 1250
FOR ANY STRUCTURE WIDTH**

NOTES:

- 1 This drawing shall be used for any structure width provided depth of cover over structure ≥ 1250
- ② The 1830 length guardrail post shall be used if $1250 \leq \text{cover} \leq 1550$.
- ③ The 2130 long guardrail post shall be used if cover > 1550 .
- ④ 1100 for 1830 length post and 1400 for 2130 length post.
- ⑤ A = 600 for 1830 length post.
A = 0 (min.) for 2130 length post.

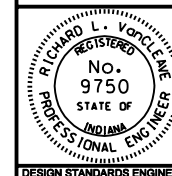
All Dimension are in mm unless otherwise specified

INDIANA DEPARTMENT OF TRANSPORTATION

**GUARDRAIL ASSEMBLY FOR
ANY STRUCTURE WIDTH**

SEPTEMBER 2001

STANDARD DRAWING NO. 601-NWGA-04



/s/ Richard L. VanCleave 9-04-01
DESIGN STANDARDS ENGINEER DATE

/s/ Firooz Zandi 9-04-01
CHIEF HIGHWAY ENGINEER DATE

DESIGN STANDARDS ENGINEER