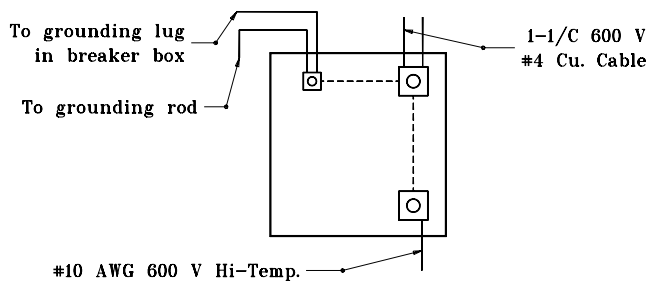


BREAKER PANEL



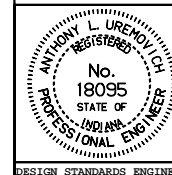
NEUTRAL GROUNDING LUG DETAIL

GENERAL NOTES

1. For all luminaire wiring from breaker panel, the last luminaire shall be #10 AWG stranded copper, 600 V.
2. Where sign illumination and underpass illumination are to be installed on the same structure, both sign and underpass luminaires may be connected to the same circuit.

INDIANA DEPARTMENT OF TRANSPORTATION
UNDERPASS LIGHTING DETAILS
CIRCUIT BREAKER WIRING DETAIL
 MARCH 1995

STANDARD DRAWING NO. **E 807-LTUP-06**



DETAILS PLACED IN THIS FORMAT 11-15-99

/s/ Anthony L. Uremovich 11-15-99
 DESIGN STANDARDS ENGINEER DATE

/s/ Firooz Zandi 11-15-99
 CHIEF HIGHWAY ENGINEER DATE

DESIGN STANDARDS ENGINEER ORIGINALLY APPROVED 3-01-95