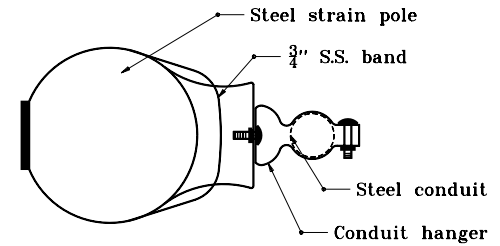


GENERAL NOTES

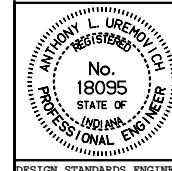
- ① This distance shall be from 10 ft to 15 ft above centerline of pavement for vehicular signals and from 7 ft to 10 ft above top of sidewalk for pedestrian signals.
- ② Each pedestrian signal and each vehicular signal requires 2 pole plates and 2 pipe arms.



DETAIL A

INDIANA DEPARTMENT OF TRANSPORTATION
**SIGNAL INDICATION MOUNTED
 ON STEEL OR WOOD POLES**
 SEPTEMBER 1998

STANDARD DRAWING NO. **E 805-SGCO-04**



DETAILS PLACED IN THIS FORMAT 11-15-99

/s/ Anthony L. Uremovich 11-15-99
 DESIGN STANDARDS ENGINEER DATE

/s/ Firooz Zandi 11-15-99
 CHIEF HIGHWAY ENGINEER DATE

DESIGN STANDARDS ENGINEER ORIGINALLY APPROVED 9-01-98