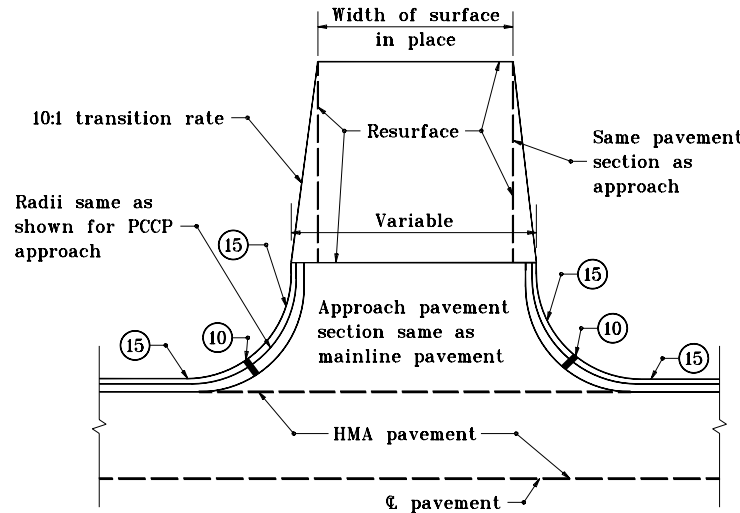
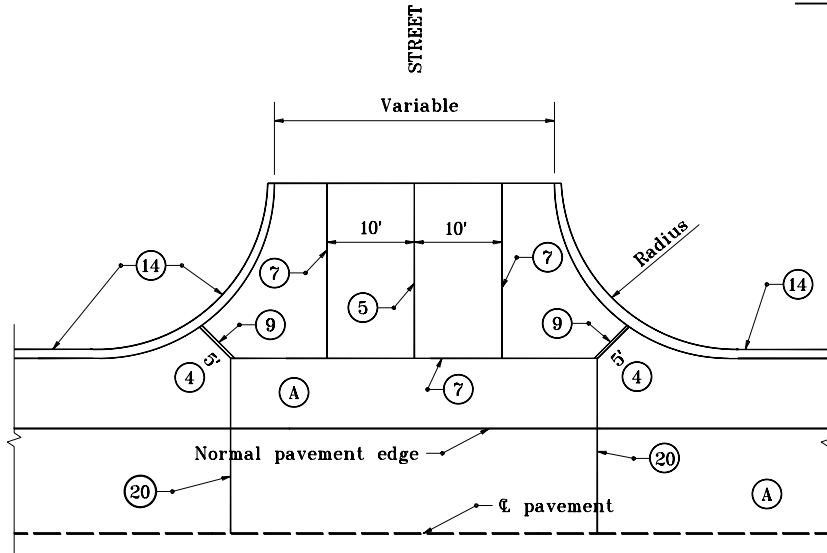


**ALLEY APPROACH  
WITH PCCP MAINLINE PAVEMENT**



**STREET OR ALLEY APPROACH  
WITH HMA MAINLINE PAVEMENT**



**STREET APPROACH  
WITH PCCP MAINLINE PAVEMENT**

**GENERAL NOTES**

1. Radii of 25' at minor cross streets shall be provided on new construction and on reconstruction where space permits.
  2. Radii of 30' or more at major cross streets shall be provided where feasible so that a truck may turn without encroachment.
  3. Radii of 40' or more at major cross streets shall be provided where trucks and buses repeatedly turn.
- ④ Ear construction type B permitted as shown on Standard Drawing E 605-ERCN-02.

**LEGEND**

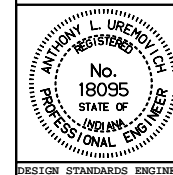
- Ⓐ PCCP
- ⑤ Longitudinal joint
- ⑦ Keyway joint
- ⑨ 1" preformed joint filler
- ⑩ ½" preformed joint filler
- ⑭ Integral concrete curb
- ⑮ Combined curb and gutter
- ⑳ Contraction joint

INDIANA DEPARTMENT OF TRANSPORTATION

**STREET or ALLEY APPROACH  
HMA MAINLINE PAVEMENT**

JANUARY 2000

STANDARD DRAWING NO. **E 610-PRAP-13**



/s/ Anthony L. Uremovich 1-03-00  
DESIGN STANDARDS ENGINEER DATE

/s/ Firooz Zandi 1-03-00  
CHIEF HIGHWAY ENGINEER DATE

DESIGN STANDARDS ENGINEER