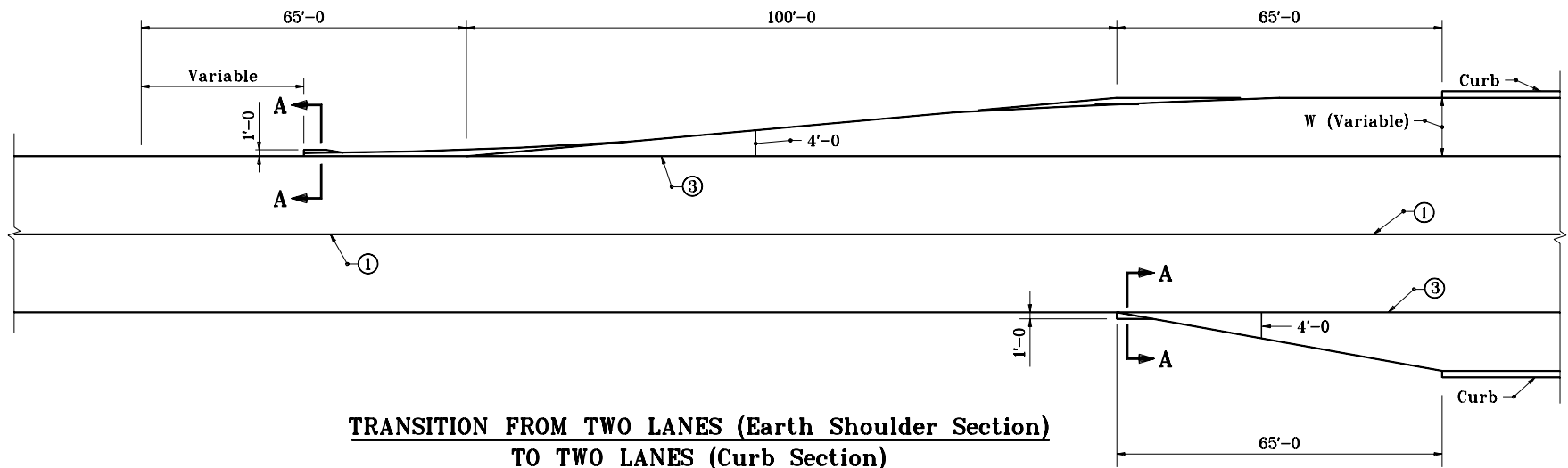


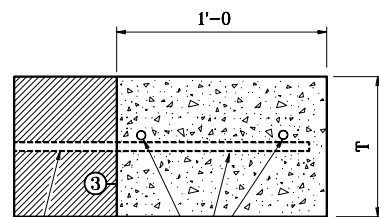
**LEGEND**

- ① Longitudinal joint
- ③ Longitudinal construction joint
- T = Nominal pavement thickness

Curve data variable  
except tangent length = 50'-0"



**TRANSITION FROM TWO LANES (Earth Shoulder Section)  
TO TWO LANES (Curb Section)**



Omit dowel bars where  
pavement is in place.

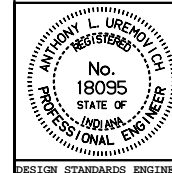
**SECTION A-A**

INDIANA DEPARTMENT OF TRANSPORTATION

**TRANSITION OF EARTH  
SHOULDER TO CURB SECTION**

SEPTEMBER 1997

STANDARD DRAWING NO. E 605-TSCS-01



DETAILS PLACED IN THIS FORMAT 11-15-99

/s/ Anthony L. Uremovich 11-15-99  
DESIGN STANDARDS ENGINEER DATE

/s/ Firooz Zandi 11-15-99  
CHIEF HIGHWAY ENGINEER DATE

DESIGN STANDARDS ENGINEER

ORIGINALLY APPROVED 9-01-97