

SIGN NUMBER	SIGN MESSAGE	POST DESIGN		SIGN SIZE	SIGN COLOR		BORDER WIDTH	MARGIN WIDTH	LETTER HEIGHT SERIES-LINE 1	LETTER HEIGHT SERIES-LINE 2	LETTER HEIGHT SERIES-LINE 3	WORD OR LINE ①	PCT. ①	ARROW SIZE		CORNER RADIUS	NUMBER OF POSTS	
		100x100 WOOD	STEEL		BACKGROUND	COPY								HEAD	SHAFT		ONE	TWO
XG20-1	"Road Construction Next _____Miles"	*	B	1500 x 900	Orange	Black	20	15	150 - Series C	150 - Series C	150 - Series C					55		X
XG20-2	"End Construction"	*	B	1500 x 600	Orange	Black	15	10	150 - Series C	150 - Series C	150 - Series C					35		X
XG20-2a	"End Road Work"	*	B	1200 x 600	Orange	Black	15	10	150 - Series C	150 - Series C	150 - Series C					35		X
XG20-4	"Pilot Car Follow Me"	---	---	900 x 450	Orange	Black	15	10	125 - Series C	125 - Series C	125 - Series C					35		X
XG20-5	(Route number or) " _ Lane Closed" (date)	*	B	1500 x 900	Orange	Black	20	15	150 - Series C	150 - Series C	150 - Series C					55		X
XG20-5-B	"Worksite" plate	---	---	1200 x 400	Orange	Black	15	10	200 - Series C							35	----	----
XW4-9 (R or L)	"Detour" (above black arrow)"Detour"	*	A	750 x 600	Orange	Black	15	10	125 - Series D			"Detour"		180 x 200	275 x 90	35		X
XW4-9-B (R or L)	"Detour" (above black arrow)"Detour"	*	B	1500 x 1200	Orange	Black	30	20	250 - Series D			"Detour"		375 x 405	555 x 180	75		X
XW4-10 (R or L)	"Detour" (inside orange arrow)	*	B	1200 x 450	Black & Orange	Black		10	150 - Series D					300 x 340	755 x 200	35		X
XW1-1-A (R or L)	(Turn symbol)	*	A	900 x 900	Orange	Black	20	15						270 x 300	135	55		X
XW1-1-B (R or L)	(Turn symbol)	*	B	1200 x 1200	Orange	Black	30	20						360 x 405	180	75		X
XW1-2-A (R or L)	(Curve symbol)	*	A	900 x 900	Orange	Black	20	15						270 x 300	135	55		X
XW1-2-B (R or L)	(Curve symbol)	*	B	1200 x 1200	Orange	Black	30	20						360 x 405	180	75		X
XW1-3-A (R or L)	(Reverse turn symbol)	*	A	900 x 900	Orange	Black	20	15						270 x 300	135	55		X
XW1-3-B (R or L)	(Reverse turn symbol)	*	B	1200 x 1200	Orange	Black	30	20						360 x 405	180	75		X
XW1-4-A (R or L)	(Reverse curve symbol)	*	A	900 x 900	Orange	Black	20	15						270 x 300	135	55		X
XW1-4-B (R or L)	(Reverse curve symbol)	*	B	1200 x 1200	Orange	Black	30	20						360 x 405	180	75		X
XW1-6	(Single headed arrow)	*	B	1200 x 600	Orange	Black	20	20						335 x 380	655 x 165	35		X
XW1-6-A	(Single headed arrow)	*	B	1500 x 750	Orange	Black	20	15						415 x 465	825 x 200	55		X
XW4-2 (R or L)	(Lane ends merge_____symbol)	*	A	900 x 900	Orange	Black	20	15	See Traffic Control Standard Sheet 801-TCSN-09							55		X
XW4-2-A (R or L)	(Lane ends merge_____symbol)	*	B	1200 x 1200	Orange	Black	30	20	See Traffic Control Standard Sheet 801-TCSN-09							35		X
XW6-2a-A	(Divided highway ends symbol)	*	A	900 x 900	Orange	Black	20	15	125 - Series D	125 - Series D	125 - Series D					55		X
XW6-2a-B	(Divided highway ends symbol)	*	B	1200 x 1200	Orange	Black	30	20	175 - Series D	175 - Series D	175 - Series D					75		X
XW6-3-B	(Two way traffic symbol)	*	B	1200 x 1200	Orange	Black	30	20						295 x 350	595 x 150	75		X
XW8-1-A	"Bump"	*	A	900 x 900	Orange	Black	20	15	250 - Series D							55		X
XW8-1-B	"Bump"	*	B	1200 x 1200	Orange	Black	30	20	300 - Series D							75		X
XW8-2-A	"Dip"	*	A	900 x 900	Orange	Black	20	15	250 - Series E							55		X
XW8-2-B	"Dip"	*	B	1200 x 1200	Orange	Black	30	20	300 - Series E							75		X
XW8-3-A	"Pavement Ends"	*	A	900 x 900	Orange	Black	20	15	150 - Series C	150 - Series C						55		X
XW8-4-A	"Soft Shoulder"	*	A	900 x 900	Orange	Black	20	15	150 - Series C	150 - Series C						55		X
XW8-4-B	"Soft Shoulder"	*	B	1200 x 1200	Orange	Black	30	20	200 - Series C	200 - Series C						75		X
XW8-6-A	"Truck Crossing"	*	A	900 x 900	Orange	Black	20	15	150 - Series C	150 - Series C						55		X
XW8-6-B	"Truck Crossing"	*	B	1200 x 1200	Orange	Black	30	20	200 - Series C	200 - Series C						75		X
XW9-1-A (R or L)	"_____ Lane Ends"	*	A	900 x 900	Orange	Black	20	15	150 - Series D	150 - Series D	150 - Series D					55		X
XW9-1-B (R or L)	"_____ Lane Ends"	*	B	1200 x 1200	Orange	Black	30	20	200 - Series D	200 - Series D	200 - Series D					75		X
XW9-2-A (R or L)	"Lane Ends Merge _____"	*	B	1200 x 1200	Orange	Black	30	20	150 - Series C	200 - Series D	200 - Series D					55		X
XW12-1-C	(Double headed arrow)	*	B	1200 x 1200	Orange	Black	30	20						320 x 380	300 x 135	75		X
XW13-1-A	"_____MPH" (Advisory speed plate)	*	A	600 x 600	Orange	Black	15	10	250 - Series E	100 - Series E						35	----	----
XW20-1	"Road Construction Ahead"	*	B	1200 x 1200	Orange	Black	30	20	175 - Series C	175 - Series C	175 - Series C	"Construction"	40			75		X
XW20-1-A	"Road Construction Ahead"	*	B	1500 x 1500	Orange	Black	35	25	200 - Series C	200 - Series C	200 - Series C	"Construction"	40			95		X
XW20-1a	"Road Repairs Next _____Miles"	*	B	1200 x 1200	Orange	Black	30	20	200 - Series C	200 - Series C	150 - Series C	"Construction"	40			75		X
XW20-2	"Detour Ahead"	*	B	1200 x 1200	Orange	Black	30	20	200 - Series D	200 - Series D		"Detour"	40			75		X
XW20-3	"Road Closed Ahead"	*	B	1200 x 1200	Orange	Black	30	20	175 - Series D	175 - Series D	175 - Series D					75		X
XW20-4	"One Lane Road Ahead"	*	B	1200 x 1200	Orange	Black	30	20	175 - Series C	175 - Series C	175 - Series C					75		X
XW20-5 (R, C, or L)	"_____ Lane Closed Ahead"	*	B	1200 x 1200	Orange	Black	30	20	150 - Series C	150 - Series C	150 - Series C	"Center Lane"	50			75		X
XW20-7a-A	(Flagger symbol)	*	B	1200 x 1200	Orange	Black	30	20								35		X
XW21-1a	(Workers symbol)	*	A	900 x 900	Orange	Black	20	15	150 - Series D							55		X
XW21-2	"Fresh Oil"	*	A	750 x 750	Orange	Black	20	10	150 - Series D	150 - Series D		"Fresh"	20			45	X	
XW21-2-A	"Fresh Oil"	*	A	900 x 900	Orange	Black	20	15	175 - Series D	175 - Series D		"Fresh"	20			55		X
XW21-3-A	"Road Machinery Ahead"	*	B	1200 x 1200	Orange	Black	30	20	175 - Series D	175 - Series D	175 - Series D	"Machinery"	40			75		X
XW21-4-A	"Road Work Ahead"	*	B	1200 x 1200	Orange	Black	30	20	175 - Series D	175 - Series D	175 - Series D					75		X
XW21-5-A	"Shoulder Work"	*	A	900 x 900	Orange	Black	20	15	150 - Series C	150 - Series C		"Shoulder"	25			55		X
XW21-6-A	"Survey Crew"	*	A	900 x 900	Orange	Black	20	15	150 - Series C	150 - Series C						55		X

\* Wood post permitted.

## GENERAL NOTES

① Spacing between letters of this word or line shall be reduced by this percentage as shown in the FHWA document, Standard Highway Sign.

2. See Standard Drawing E 801-TCSN-11 for additional general notes.

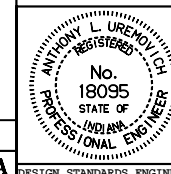
All dimensions are in mm unless otherwise specified.

INDIANA DEPARTMENT OF TRANSPORTATION

## SIGN DESIGN DETAILS

SEPTEMBER 1999

STANDARD DRAWING NO. 801-TCSN-12



/s/ Anthony L. Uremovich 9-01-99  
DESIGN STANDARDS ENGINEER DATE

/s/ Donald W. Lucas 9-01-99  
CHIEF HIGHWAY ENGINEER DATE

Source Sheet: Det3A,  
Source Sheet: Det5, 5A