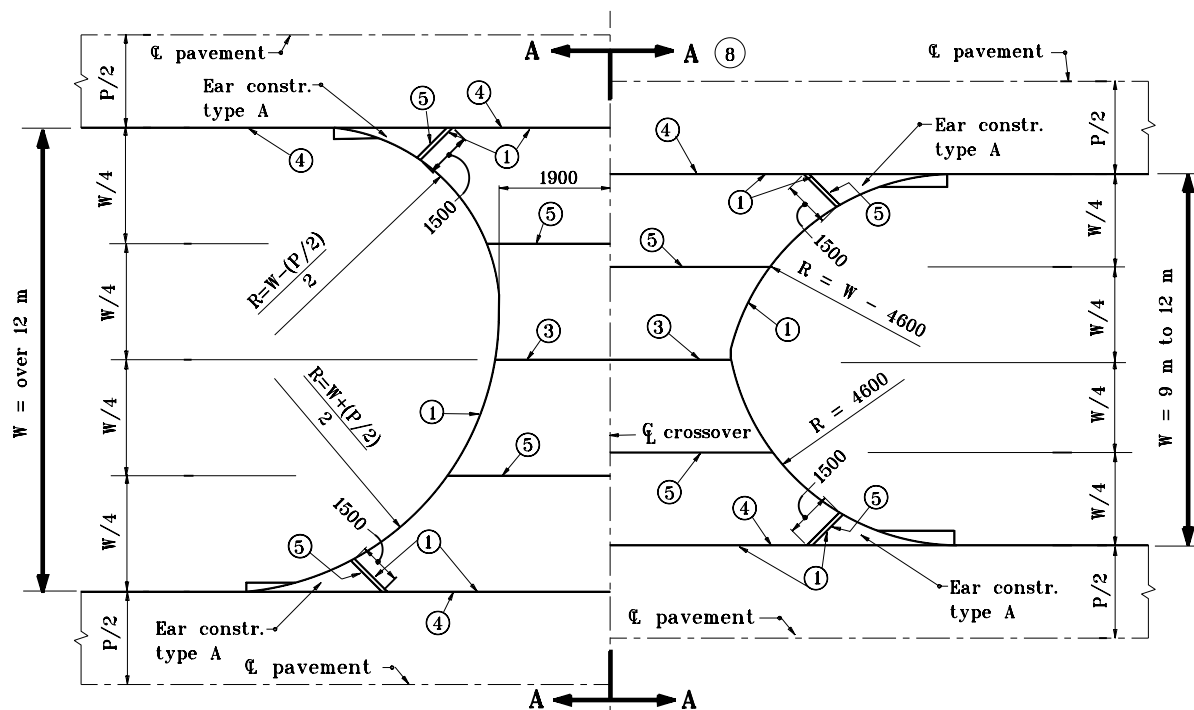


PRIVATE DRIVE CROSSOVER PLAN FOR $W = 2.3 \text{ m}$ to less than 9 m



PRIVATE DRIVE CROSSOVER PLAN FOR $W = 9 \text{ m}$ to over 12 m

NOTES :

- ① Thickened edge
2. See Standard Drawings:
605-ERCN-01 for TYPE "A" ear construction
605-ERCN-02 for TYPE "B" ear construction
610-DRIV-17 for sections A-A and B-B
- ③ Contraction joint type D-1, see Standard Drawing 503-CCPJ-01 for details.
- ④ Keyway construction joint, see Standard Drawing 610-DRIV-16 for details.
- ⑤ 30 mm preformed joint filler
6. Private drive crossover shall be constructed of a flexible section unless otherwise directed by the engineer.
- ⑦ Integral concrete curb, see Standard Drawing 605-CCIN-01 for details.
- ⑧ For cross sections A-A and B-B see Standard Drawing 610-DRIV-18.

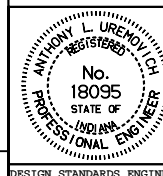
All dimensions are in mm unless otherwise specified.

INDIANA DEPARTMENT OF TRANSPORTATION

**PRIVATE DRIVE CROSSOVERS
PLANS**

SEPTEMBER 1999

STANDARD DRAWING NO. **610-DRIV-17**



/s/ Anthony L. Uremovich 9-01-99
DESIGN STANDARDS ENGINEER DATE

/s/ Donald W. Lucas 9-01-99
CHIEF HIGHWAY ENGINEER DATE

Source Sheet: **MJ**