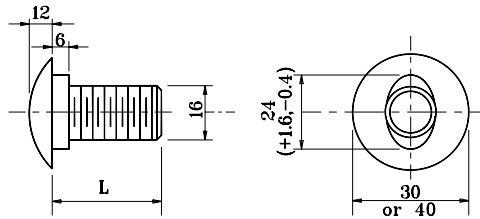


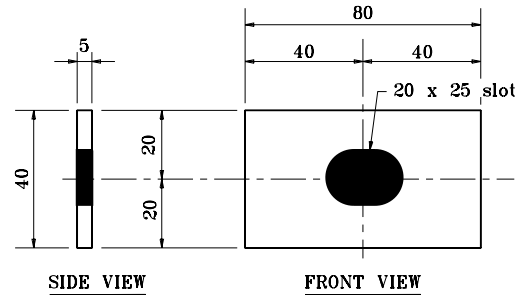
## GENERAL NOTES

1. This sheet shall be used when W-beam guardrail is specified. This sheet shall also be used when a W-beam guardrail system requires the use of standard W-beam guardrail components.
2. The details on this sheet are for the standard components of W-beam guardrail.

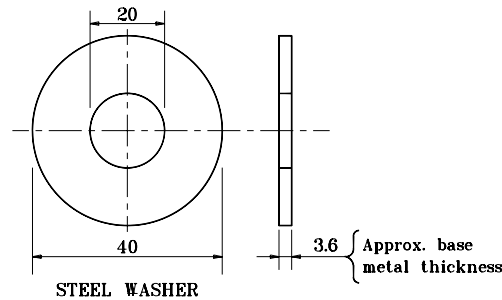


**M16 BUTTON HEAD BOLT**

| L   | THREAD LENGTH         |
|-----|-----------------------|
| 30  | Full Length Thread    |
| 50  | 40 Min. Thread Length |
| 240 | 45 Min. Thread Length |
| 460 | 60 Min. Thread Length |
| 640 | 50 Min. Thread Length |



**RECTANGULAR PLATE WASHER**



**WASHER FOR M16 BOLT**

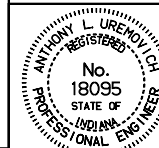
All dimensions are in mm unless otherwise specified.

INDIANA DEPARTMENT OF TRANSPORTATION

**W-BEAM  
GUARDRAIL COMPONENTS**

SEPTEMBER 1999

STANDARD DRAWING NO. **601-WBGC-02**



/s/ Anthony L. Uremovich 9-01-99  
DESIGN STANDARDS ENGINEER DATE

/s/ Donald W. Lucas 9-01-99  
CHIEF HIGHWAY ENGINEER DATE

Source Sheet: **G-1**

DESIGN STANDARDS ENGINEER