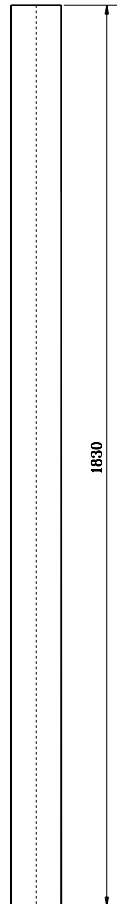
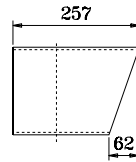


FRONT VIEW



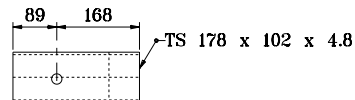
BACK VIEW



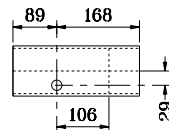
SIDE VIEW



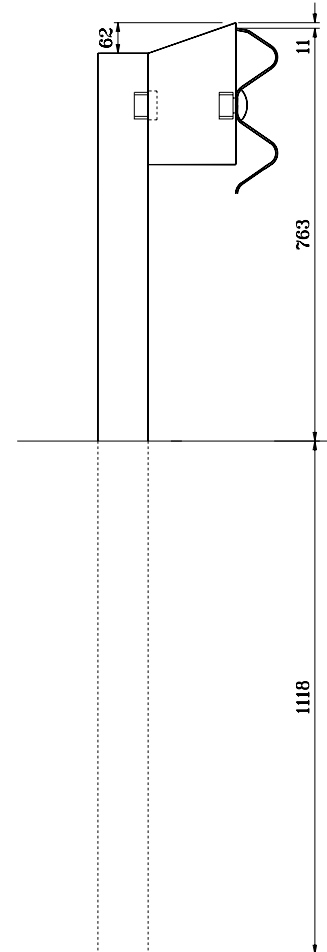
TOP VIEW



FRONT VIEW



BACK VIEW



NOTE:

1. All holes drilled or punched to 21 dia.

POST AND BLOCK AT
W-THREE TRANSITION SECTION /
W-BEAM SPLICE

All dimensions are in mm unless otherwise specified.

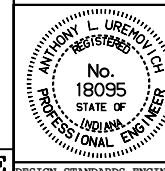
INDIANA DEPARTMENT OF TRANSPORTATION

GUARDRAIL TRANSITION

TYPE TGB

SEPTEMBER 1999

STANDARD DRAWING NO. **601-TTCB-05**



/s/ Anthony L. Uremovich 9-01-99
DESIGN STANDARDS ENGINEER DATE

/s/ Donald W. Lucas 9-01-99
CHIEF HIGHWAY ENGINEER DATE

Source Sheet: **NONE**