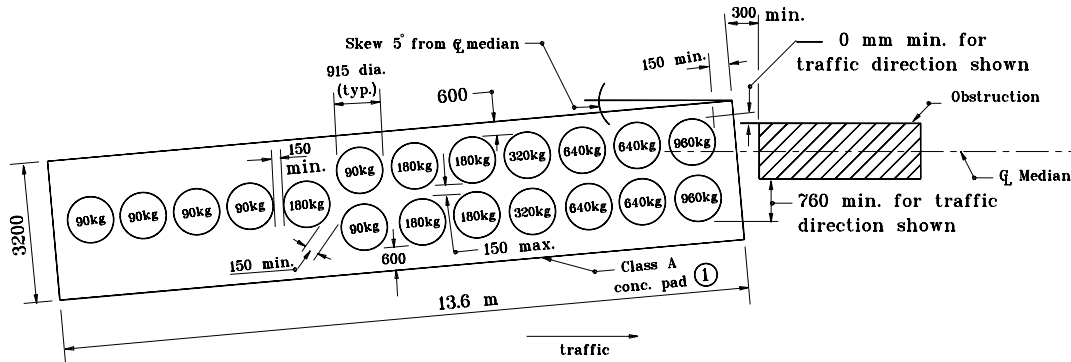
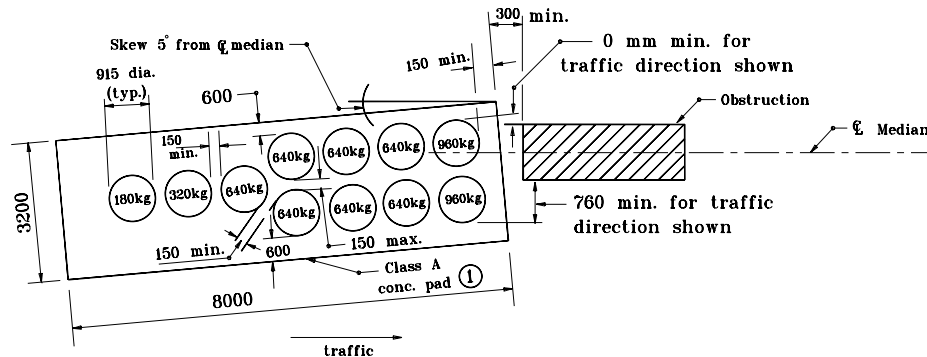


NOTES:

- ① Concrete pad shall be 150 mm thick Class A concrete with welded wire fabric 150 x 150, W3/W3 or equivalent. A clearance of 50 mm shall be provided between all sides and top of concrete pad and welded wire fabric.
2. Attenuator system including pad shall not encroach on shoulder of the roadway.
3. Appropriate impact attenuator design speed shall be used for concrete pad size and gravel barrel layout.
4. See Standard Drawings 601-GAIA-01 and 02 for grading details.



**CONCRETE PAD PLAN IMPACT ATTENUATOR TYPE ED
GRAVEL BARREL ARRAY FOR 110 km/h**



**CONCRETE PAD PLAN IMPACT ATTENUATOR TYPE ED
GRAVEL BARREL ARRAY FOR 70 km/h**

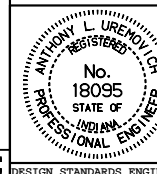
All dimensions are in mm unless otherwise specified.

INDIANA DEPARTMENT OF TRANSPORTATION

IMPACT ATTENUATOR ED LAYOUT

SEPTEMBER 1999

STANDARD DRAWING NO. 601-IAED-01



/s/ Anthony L. Uremovich 9-01-99
DESIGN STANDARDS ENGINEER DATE

/s/ Donald W. Lucas 9-01-99
CHIEF HIGHWAY ENGINEER DATE

Source Sheet: NONE