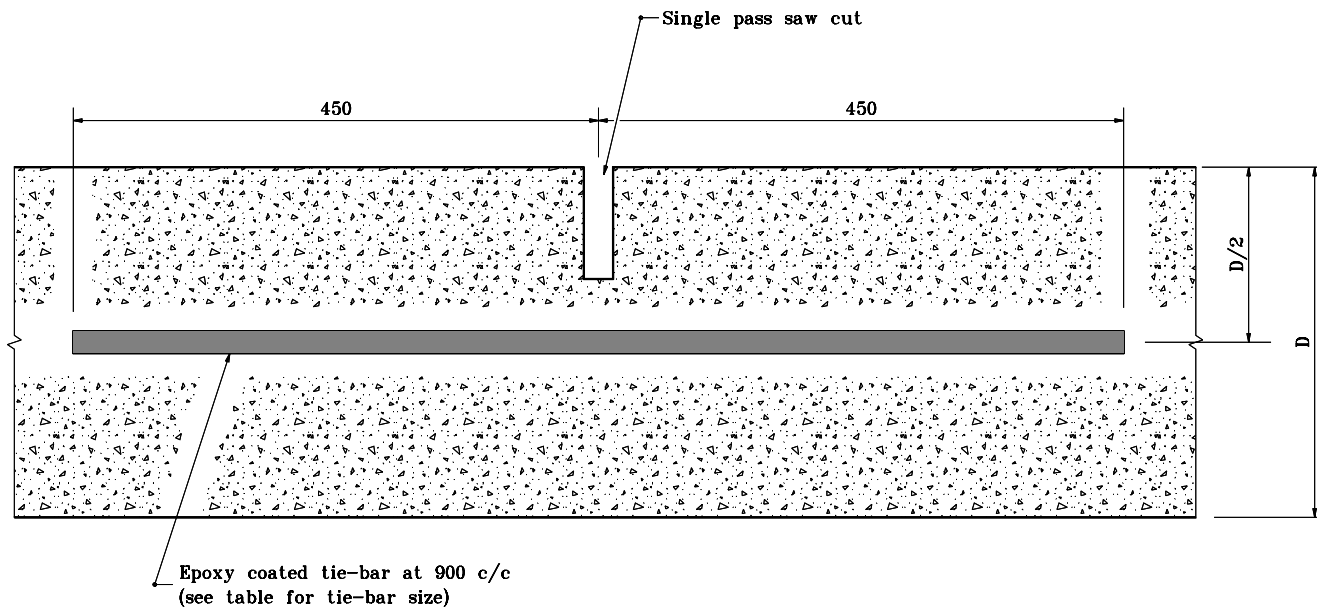


TIE-BAR SIZES FOR LONGITUDINAL JOINT

Pavement Thickness, D	Tie Bar Size
Less than 225	#16
225 through 300	#19
Greater than 300	#22



TRANSVERSE SECTION THROUGH CONCRETE PCCP

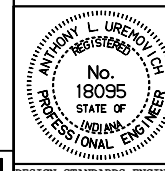
All dimensions are in mm unless otherwise specified.

INDIANA DEPARTMENT OF TRANSPORTATION

LONGITUDINAL JOINT

SEPTEMBER 1999

STANDARD DRAWING NO. 503-CCPJ-02



/s/ Anthony L. Uremovich 9-01-99
DESIGN STANDARDS ENGINEER DATE

/s/ Donald W. Lucas 9-01-99
CHIEF HIGHWAY ENGINEER DATE

Source Sheet: CCPJ1